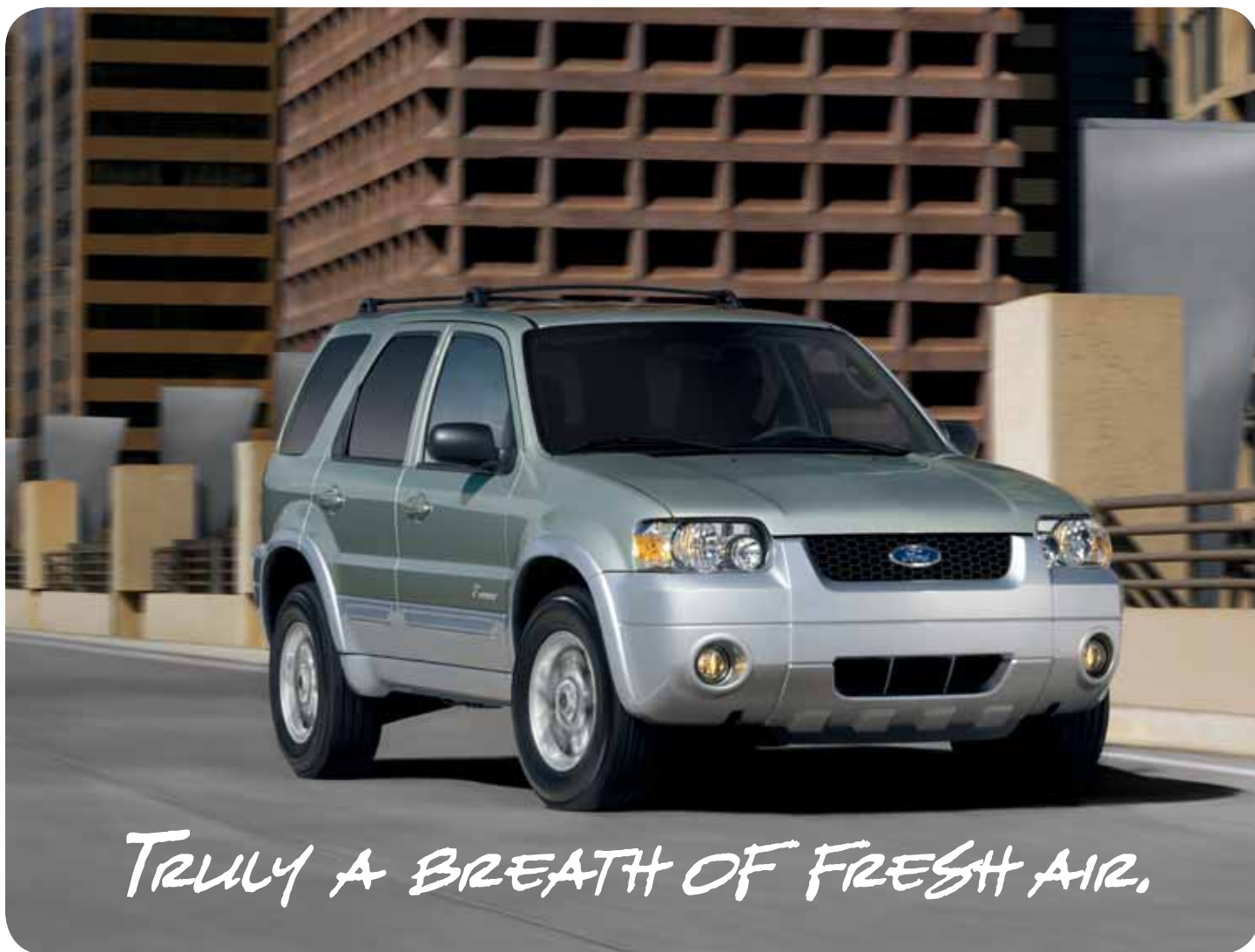




2006

ESCAPE HYBRID



Wherever it travels, Ford Escape Hybrid causes quite a stir in the atmosphere. At the North American International Auto Show® it was named 2005 North American Truck of the Year.* *Popular Science* awarded it Best of What's New honors in the Automotive Category.** Even the Environmental Protection Agency and Department of Energy rated it Best SUV in the 2005 Fuel Economy Guide and Green Vehicle Guide. As the earth's first full-hybrid SUV, Ford Escape Hybrid proudly accompanies Escape, Explorer and Expedition in the lineup of capably confident Ford SUVs. All are Built to Do More.

*January 2005. **December 2004.

Contents

Powertrain/Capability	2	Interior/Versatility	4
Hybrid Basics	3	Specifications	5-6

REMARKABLY EFFICIENT
AND JOYOUSLY QUICK.



As *NewCarTestDrive.com* said, “The powertrain provides performance on par with a V6 engine.” To provide this lively acceleration, the electric motor gives the gas engine extra power during Electric Power Assist, 1 of 4 basic stages of powertrain operation. The Vehicle System Controller shuts off the gas engine at low speeds in Stop/Start mode, starting it back up as needed. At speeds up to 25 mph, the electric motor alone powers the vehicle in Electric Drive. During Regenerative Braking, energy normally lost in braking is used to recharge the battery pack.



The **Intelligent 4WD System** available on Escape Hybrid is always on and always working. So there's no button to push, dial to turn or lever to engage. The system monitors traction (5000 times per second – much faster

than any person could) and automatically adjusts torque as needed. So you can just enjoy the ride. Using Atkinson-cycle combustion to improve efficiency, the **2.3L I-4 Engine** and electric

motor give Escape Hybrid a sporty 155 hp and outstanding fuel efficiency. To see when the battery pack is charging or providing extra power, check the **Battery-State Gauge** located to the left of the tachometer.

THE GAS STATION OWNER WILL MISS YOU.



Along with SUV essentials like room for 5, loads of cargo space and available 4-wheel drive, Ford Escape Hybrid delivers near-zero emissions*, incredible fuel efficiency** and extended driving range. And because the battery recharges as you drive, there's never any need to plug it in. Just gas up – and go, go, go.

How It Works Rated at 330 volts, Escape Hybrid's nickel-metal-hydrate battery pack supplies power to the electric motor, while the 2.3L I-4 Atkinson-cycle gasoline engine runs only when necessary. The system automatically chooses the best power method (gas, electric or both) for any driving situation. When you need extra power during acceleration, cruising, or to recharge the battery, the system will make sure it's there. When you don't, it will turn off the gas engine to save fuel.

How It's Unique As the earth's first full-hybrid SUV, Escape Hybrid can operate on the gas engine, on electric battery power alone, or on both at the same time. Because it can run on battery power alone at low speeds (up to 25 mph), Escape Hybrid actually gets more mpg in city driving than on the highway.

How It's Cleaner In pure electric mode, Escape Hybrid uses no gas and emits virtually no harmful pollutants. So it helps contribute to a healthy environment by polluting less and consuming less of the earth's natural resources. Escape Hybrid meets strict Super Ultra Low Emissions Vehicle (SULEV II) and Advanced Technology Partial Zero Emissions Vehicle (AT-PZEV) standards, making it an amazing 99.4% cleaner, on average, than an unregulated vehicle. Best of all, reduced emissions and better fuel efficiency mean you can breathe easier.

How It Performs Escape Hybrid delivers an impressive 36 mpg in city driving.** At that rate, you'll be able to drive 400-500 miles on one tank of gas. When you're stopped in traffic or idling at a light, the system saves fuel by shutting off the gas engine and running in pure electric mode. So Escape Hybrid really thrives in "stop-and-go" situations. In fact, Escape Hybrid FWD achieves city fuel economy that's up to 112% better than the average V6-equipped SUV.†



Located in the cargo area floor, the **Battery Pack** supplies electrical energy to start the engine, drive at low speeds and boost acceleration.

*Certified Tier 2 Bin 4, SULEV II and AT-PZEV.

**EPA-estimated mpg based on FWD configuration. Actual mileage will vary with driving habits. See Specifications for details.

†Based on comparison of EPA-estimated fuel economy data for all 2005 SUVs equipped with conventional V6 engines.



PUT A PREMIUM ON LUXURY? ESCAPE HYBRID HAS IT.



In honor of your decision to help conserve the earth's precious resources, equip Escape Hybrid with the available new Premium Package for the perfect reward. Its sleek, monochromatic exterior and premium leather-trimmed seats will draw admiring glances. Inside, the exclusive Hybrid Energy/Navigation/Audiophile® System allows you to see the hybrid-energy-flow diagram, monitor your fuel economy, view a complete map, listen to our awesome Audiophile® Sound System, and more. Also included in this package, the Reverse Sensing System utilizes information from a network of smart sensors to help warn you of objects behind the vehicle when the transmission is placed in Reverse. You're sure to thank yourself for the heated front seats and heated sideview mirrors when the weather turns cool. And on warm, sunny days you'll be loving the power moonroof, available only with the Premium Package.

IT HANDLES IT ALL WITH RESPECT FOR YOUR FUTURE.



We all want a brighter tomorrow. To start making it happen, just fold down Escape Hybrid's 60/40 split rear seats for a cavernous 62.1 cu. ft. of cargo space. Bringing friends along? You'll still have 27.6 cu. ft. of space behind the 2nd row. Escape Hybrid's available 110-volt power outlet works just like the AC outlet in your home. So you don't need an adapter to bring all kinds of "essentials" on the road with you: power tools, a radio, even a small TV. It's all up to you.

PACKAGE HIGHLIGHTS



STANDARD

16" aluminum wheels • Fog lamps • Molded-in-color grey front and rear fascias and bodyside cladding • Power Group with power windows, door locks, mirrors and remote keyless-entry system with 2 key fobs • Privacy glass • Roof rack with 2 horizontal crossbars • Premium cloth low-back front bucket seats with map pockets • Premium cloth 60/40 split rear seat with tip-fold-flat latch • AM/FM stereo with 6-disc in-dash CD changer • Floor shifter and console with 2 cupholders and storage bin • Power 6-way driver's seat



APPEARANCE PACKAGE

Painted Silver Metallic fascias, bodyside cladding and wheel-lip moldings • Body-color door handles and liftgate appliqué



PREMIUM PACKAGE

Monochromatic exterior appearance • Premium leather-trimmed seats • Heated front seats • Leather-wrapped steering wheel • Heated sideview mirrors • Reverse Sensing System • Hybrid Energy/Navigation/Audiophile® System • AC 110-volt power outlet • Cargo area retractable cover • Rear floor mats

STANDARD FEATURES

MECHANICAL

2.3L I-4 Atkinson-cycle engine with Permanent-Magnet AC-synchronous electric motor
330-volt sealed nickel-metal-hydride (Ni-MH) battery
Regenerative Braking System
Electronically Controlled Continuously Variable Transmission (eCVT)
4-wheel independent suspension
Electric Power-Assisted Steering (EPAS)
Intelligent 4WD System on 4WD-equipped vehicles
Power 4-wheel disc brakes with Anti-lock Brake System (ABS)
Steering wheel-mounted speed control

SAFETY/SECURITY

Airbags* — Dual-stage driver and single-stage front-passenger with Front-Passenger Sensing System (FPSS)
Battery saver with headlamps-off delay
Belt-Minder® safety belt reminder
Child-safety rear door locks
Driver and front-passenger safety belt pretensioners and height-adjustable D-rings
LATCH — Lower anchors and tether anchors for child-safety seats (rear outboard positions)
Mini-size spare wheel and tire (underbody-mounted) with wheel-nut wrench and jack
Perimeter alarm
Safety belt restraint system — 3-point safety belt system at all seating positions
Side-impact door beams

EXTERIOR

16" aluminum wheels
P235/70R16 all-season BSW tires
Fog lamps
Molded-in-color grey front and rear fascias and bodyside cladding
Privacy glass
Roof rack with 2 horizontal crossbars

SEATING

Front seats — Premium cloth low-back buckets with map pockets
Power 6-way driver's seat
Rear seats — Premium cloth 60/40 split seats with tip-fold-flat latch

WARRANTY

3-Year/36,000-Mile Bumper-to-Bumper
Extended 8-Year/100,000-Mile Hybrid Warranty**
3-Year/36,000-Mile 24-Hour Roadside Assistance

INTERIOR

Air conditioning — Manual
AM/FM stereo with 6-disc in-dash CD changer and 4 speakers
Assist handles — 2 in 1st row, 2 in 2nd row (1st row only with Safety Package option)
Center dome light with map lights and cargo area light
Floor mats — Front, color-keyed carpeted
Floor shifter and console with 2 cupholders and storage bin
Locking glove compartment
Power Group — Power windows, door locks, mirrors and remote keyless-entry system with 2 key fobs
Power point with cap in floor console
Visor vanity mirrors

*Always wear your safety belt and secure children in the rear seat. **10-Year/150,000-Mile Hybrid Battery Warranty in Green States (California, Maine, Massachusetts, New York and Vermont). †Not available with Premium Package. ‡Available only when Premium Package is ordered. Audiophile is a registered trademark of Audiophile, Inc.

OPTIONAL FEATURES & PACKAGES

Appearance Package† — Painted Silver Metallic fascias, bodyside cladding and wheel-lip moldings; body-color door handles and liftgate appliqué

Audiophile Sound System with 6-disc in-dash CD changer and satellite capability

Cargo area retractable cover

Floor mats — Rear

Hybrid Energy/Navigation/Audiophile System

Leather Comfort Group — Includes leather-trimmed seats and leather-wrapped steering wheel

Power moonroof††

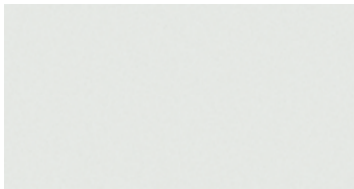
Power outlet — AC 110-volt in front console

Premium Package — Monochromatic exterior appearance, premium leather-trimmed seats, heated front seats, leather-wrapped steering wheel, heated sideview mirrors, Reverse Sensing System, Hybrid Energy/Navigation/Audiophile System, AC 110-volt power outlet, cargo area retractable cover and rear floor mats

Safety Package — Includes front-seat side-impact airbags and Safety Canopy™ System with side-curtain airbags and rollover sensor



EXTERIOR COLORS



Oxford White



Redfire Metallic*



Titanium Green Metallic*



Sonic Blue Metallic



Silver Metallic*



Dark Shadow Grey Metallic*



Black

*Available on the Premium Package.
Ford uses clearcoat paint for beauty and protection. Colors shown are representative only. Not all colors are available on all models. See your dealer for actual paint/trim options.

WHEEL



16" Aluminum Wheel
Standard

INTERIOR COLORS



Medium/Dark Flint
Premium Cloth
Standard



Medium Flint Leather
Available



Dark Flint Premium Leather
with Perforated Inserts
Standard on Premium Package

HYBRID SYSTEM POWER RATINGS

NET HORSEPOWER 155

2.3L I-4 ENGINE

Horsepower @ rpm 133 @ 6000 Torque (lb.-ft. @ rpm) 124 @ 4250

ELECTRIC MOTOR

Horsepower @ rpm 94 @ 5000

EPA-ESTIMATED FUEL ECONOMY**

FWD 36 mpg city/31 hwy.

4WD 33 mpg city/29 hwy.

**Actual mileage will vary with driving habits.

Horsepower, torque, fuel economy numbers and comparisons based on 2005 competitive models, publicly available information and Ford certification data at time of publication. Some features discussed may be optional. Vehicles shown may contain optional equipment. Features shown may be offered only in combination with other options or subject to additional ordering requirements or limitations. Following publication, certain changes in standard equipment, options and the like, or product delays may have occurred which would not be included in these pages. Your Ford Dealer is the best source for up-to-date information. Ford Division reserves the right to change product specifications at any time without incurring obligations.



Choose the insurance program that's designed for your vehicle — Ford Motor Company Insurance Services. Our program helps you receive the rates and service you deserve. Call 1-877-367-3847 or visit us at www.fordvip.com for a no-obligation quote. Insurance offered by American Road Services Company (in CA, American Road Insurance Agency), a licensed agency and subsidiary of Ford Motor Company.



For a purchase or lease, the Ford **Extended Service Plan** (ESP) gives you "Peace-of-Mind" protection designed to cover key vehicle components and protect you from the cost of unexpected repairs. Ask your dealer for an ESP backed by Ford Motor Company and honored at all Ford dealerships.



Get the ride you want. Whether you plan to lease or finance, you'll find the choices that are right for you at Ford Credit. Ask your Ford Dealer for details or check us out at www.fordcredit.com.



Designed for your vehicle by the company that built your vehicle, Genuine Ford Accessories provides many choices, professional dealer installation, and strong warranty protection. Discover the quality difference of Genuine Ford Accessories. See dealer for limited warranty details.

