

2006 LEXUS LX



Vehicle shown with available equipment.



2006 LEXUS **LX** Performance



A journey down the Icefields Parkway requires a mountain of a vehicle. And while the LX generously offers luxuries as vast as the Canadian skies, its remarkable power is what earns it a place among Alberta's highest peaks. It features a bullish 4.7-liter V8 – the largest ever bolted in a Lexus – an Electronic Throttle Control System with intelligence (ETCS-i) and five-speed automatic transmission. But most notably, it now also boasts Variable Valve Timing with intelligence (VVT-i), which unleashes plenty of raw horsepower and pounds-feet of torque to power you to nearly any elevation. After all, this journey includes countless peaks stretching 10,000 feet and higher. And if the panorama from Mt. Robson is any indication, you'll want to visit every single summit.

2006 LEXUS **LX** Performance (Continued)

Going farther often requires going off-road – a place where the LX is utterly at ease. One feature that makes it so capable is full-time four-wheel drive with locking center differential. Faced with a challenging situation, the LX driver can easily switch the transfer case lever from high to low gear and then lock the center differential into place. This holds the front and rear axle at the same rotation speed and helps assure more traction and more command of your route.



2006 LEXUS LX Adjustable Height Control



The Rockies are a poignant reminder of how land surfaces differ from mile to mile. Taking this into consideration, a vehicle – particularly an off-road vehicle – must be prepared to tackle a wide array of road conditions. As a result, the LX features Adjustable Height Control (AHC) so drivers can actually elevate the vehicle depending on need. Three different settings – Low, High and Normal modes – alter the level of ground clearance. The Low mode, for example, drops the vehicle's center of gravity and is better for smooth driving conditions or, when stopped, for easier loading and access. High mode is preferred for off-road because it raises the front of the vehicle 1.6 inches and the rear by two full inches for additional ground clearance. And Normal mode is the compromise between the two. The LX's Adjustable Height Control is one more feature that helps assure a capable, commanding ride. Because just as the Rockies are ever-changing, so too will the roads you take.



2006 LEXUS LX Interior



Along your journey lies the Absaroka-Beartooth alpine wilderness – one of the largest single expanses of land above 10,000 feet, and a hiker’s dream. Similarly, the considerable expanse of the LX’s cabin is a driver’s dream. It features 90.4 cubic feet of cargo space¹ and three rows of generous seating – enough for up to eight adults and loads of cargo. Obviously, both the alpine wilderness and the LX’s cabin are entirely worth the trip.

¹See page 16 for more information.

2006 LEXUS LX Interior Amenities



As you travel from one five-star hotel to the next, why lower your standards? In fact, it's the Lexus philosophy to always keep you seamlessly connected to the lifestyle with which you're accustomed. The result? The LX, featuring the world-class sound of the available Mark Levinson® Premium Audio System,² a moonroof to gaze at the Northern Lights and heated, leather-trimmed front seats for ultimate cozy comfort – even when driving among the Rockies' grandest glaciers. You'll enjoy many more details as well, like bird's-eye maple trim, an Adaptive Variable Suspension (AVS) and steering-wheel audio controls. Even an interior air filter to help purify the cabin environment. After all, rarefied air – whatever form it takes – should be as pristine as a winter's arctic blast.

²See page 16 for more information.

2006 LEXUS LX Interior Amenities (Continued)



Grand scenery calls for grand style. And the LX does not disappoint. You'll enjoy amenities such as a Lexus Rear-Seat Audio System (RSAS), rich leather-trimmed seating and a comprehensive Lexus Memory System, which automatically adjusts the steering column, driver's seat and side-view mirrors' positioning to your specific preference. And while the call of the wild is pleasant to listen to – particularly in Yellowstone's Hayden Valley – it still pales in comparison to the rich, full sound of the LX's Mark Levinson® Premium Audio System². This feature was designed specifically for the LX and strategically places eleven speakers throughout the cabin to help deliver near concert-quality sound. The LX also features HomeLink®, a universal transceiver that operates compatible garage, gate, home lighting and home security systems. In other words, a sophisticated, luxurious experience – exactly what you would expect from a Lexus.

²See page 16 for more information.

2006 LEXUS LX DVD Navigation System & Backup Camera

The LX comes equipped with a remarkable Lexus voice-activated DVD Navigation System.³ It helps make navigating nearly effortless by providing detailed driving instructions throughout the continental U.S. and major Canadian cities. It features other conveniences such as points of interest, restaurant recommendations and 3D maps of selected locations. The NAV is also accompanied with a backup camera⁴ to capture images behind the vehicle while it's in reverse. The live color image is broadcast on the dashboard's NAV screen and proves an indispensable tool in tight parking situations and when backing up in proximity to things such as, say, steep cliffs and icy overhangs.



^{3,4} See page 16 for more information.

2006 LEXUS LX DVD Rear-Seat Entertainment System

With other-worldly hot springs, spiraling geysers and herds of wildlife, Yellowstone National Park is a visual extravaganza. Yet not every trip in an automobile is so entertaining. Sometimes it's a blessing to offer some entertainment of your own. Precisely why the LX can be equipped with the Lexus DVD Rear-Seat Entertainment System (RSES). With the touch of a button, a DVD screen gracefully extends from the ceiling to show the movie of your choice. The system is complemented by wireless headphones⁵ and a remote control so the viewer won't disturb the driver. It's thoughtful, state-of-the-art technology like this that makes the LX such a triumph with drivers, passengers and critics alike. Or in this case, a very enthusiastic two thumbs-up.



Vehicle shown with available equipment.

⁵See page 16 for more information.

2006 LEXUS LX Safety

Extensive knowledge derived from our crash testing has helped us develop such important structural refinements as impact-dissipating side pillars, front and rear crumple zones, a reinforced ladder-type frame and a collapsible steering column. Should you find yourself in a situation where your safety is compromised, it's reassuring to know that the LX is equipped with a comprehensive airbag Supplemental Restraint System (SRS).⁶ The LX comes standard with roll-sensing side curtain airbags,⁶ driver's and front passenger's airbags,⁶ and front seat-mounted side airbags (SRS).⁶ It also includes, among other things, a computer-controlled Brake Assist⁷ system, four-wheel ventilated disc brakes, and even automatic Emergency Locking Retractor (ELR) seatbelts. Rest assured, when Lexus refers to the passionate pursuit of perfection, safety is an absolute priority. Other features include Vehicle Stability Control (VSC)⁸ and rain-sensing windshield wipers. So go ahead. Choose a destination, arrive safely and enjoy that rare state of being "doubly happy."



^{6,7,8} See page 16 for more information.

2006 LEXUS **LX** Night View



As is often the case, so many places worth going to are not very easy to reach. In fact, sometimes it's their very remoteness that makes them so desirable. So to accommodate those who want to see it all, Lexus avails a host of systems to help you reach your destination. Available Lexus Night View,⁹ for example, utilizes infrared capability to sense the reflected light of objects directly ahead of the vehicle. It can reach beyond the light of low-beam headlamps and warn drivers by projecting the received image onto the lower portion of your windshield – perhaps giving you, the driver, valuable extra reaction time.

⁹See page 16 for more information.

2006 LEXUS **LX** Ownership Experience



The Lexus ownership experience is a magnificent journey within itself. Measured not in mileage, but in moments. Flashes in time that delight you, inspire you. That in whatever small way, enrich your life. You'll feel it in the peace of mind you get from our unparalleled vehicle quality and dependability. You'll feel it in the pride of knowing Lexus puts a high priority on the use of natural resources as shown in the certification of every vehicle we build. And you'll feel it in our award-winning customer service, where every dealership goes to great lengths to accommodate you. This journey of Lexus ownership is the reason Lexus owners are some of the most satisfied drivers on the road today. And why so many of them continue to return again and again. Because we understand that while a journey to the top of the world is certainly worth celebrating, it's nothing compared to the lifetime that awaits.

CUSTOMER SATISFACTION

Your total and complete satisfaction is our highest priority. Which is why you may find our dealerships provide such amenities as offices you can use for business, free pickup and delivery, service loaner vehicles, complimentary car washes, concierge services and even 24-hour emergency Roadside Assistance* for your first four years of ownership.

RESPONSIBLE THINKING

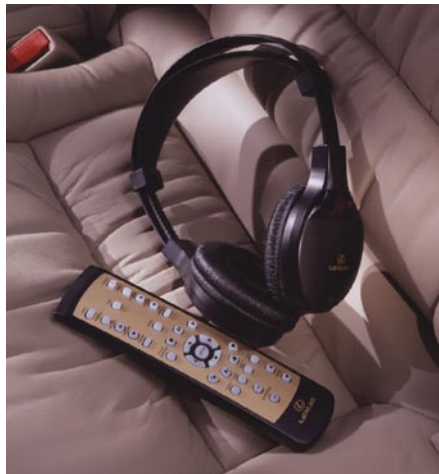
As part of an effort to reduce emissions whenever possible, every Lexus vehicle built since 2004 has been certified as either a Low-Emission Vehicle (LEV) or Ultra-Low Emission Vehicle (U-LEV) or (U-LEV II).

VALUE/DEPENDABILITY/QUALITY

Our commitment to build the finest vehicles in the world has not wavered since our inception. Seen in such ways as projected low repair costs and high retained value, our pursuit of perfection has never been stronger.

*Coverage only available in the continental U.S. and Canada. Please see your Lexus dealer for details on our Roadside Assistance program.

2006 LEXUS LX Options & Accessories



ROOF RACK/BIKE OR SKI ATTACHMENT

When heading to the beach or mountains, optional bike or ski attachments for the accessory CrossBars¹⁰ make the LX 470 even more versatile for the sports enthusiast.

OPTIONS AND ACCESSORIES

Lexus DVD Rear-Seat Entertainment System (RSES) ■ Lexus Night View⁹ ■ All-weather floor mats ■ Cargo mat ■ Cargo net ■ Moonroof wind deflector ■ Rear spoiler ■ Roof rack with CrossBars¹⁰ ■ Roof rack attachments – bike rack ■ Roof rack attachments – ski/snowboard ■ Satellite Radio* capability ■ Wheel and spare tire locks ■ Wireless headphones⁵

*Satellite Radio requires XM or Sirius capacity, receiver and monthly service fee. See your Lexus dealer for further details. Reception of the-satellite signal may vary depending on location. All fees and programming subject to change. Subscriptions subject to the terms and conditions available at www.xmradio.com or www.sirius.com. Available only in the 48 contiguous United States.
^{5,9,10} See page 16 for more information.

2006 LEXUS LX Specifications

ENGINE

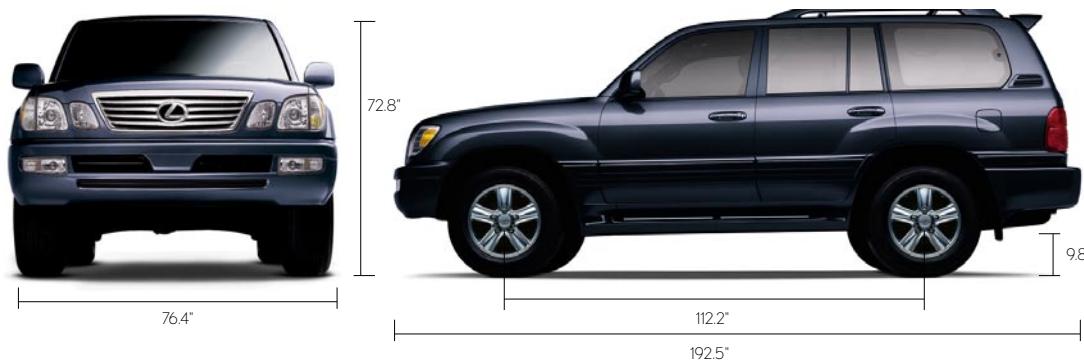
Type	90° V8, iron block and aluminum heads, certified Ultra-Low Emission Vehicle (U-LEV II)
Displacement	4.7 liters (285 cubic inches)
Valvetrain	Four cam, four valves per cylinder, with continuously Variable Valve Timing with intelligence (VVT-i)
Compression Ratio	10.0:1
Horsepower at RPM	275 hp @ 5,400
Torque at RPM	332 lb-ft @ 3,400

DRIVETRAIN

Transmission	Five-speed automatic Electronically Controlled Transmission (ECT)
Drive Wheels	Full-time four-wheel drive with locking center differential and standard Vehicle Stability Control (VSC) ⁸
Transfer Case	Two-speed, 1.00:1/2.49:1
Final Drive Ratio	4.10:1

BODY, DIMENSIONS

Type	Eight-passenger luxury utility vehicle
Construction	Welded-steel body on box-section ladder frame
Overall Length	192.5 in (4,890 mm)
Width	76.4 in (1,940 mm)
Height	72.8 in* (1,850 mm)
Wheelbase	112.2 in (2,850 mm)
Ground Clearance	9.8 in (250 mm)
Approach Angle	32 degrees (AHC High)/30 degrees (AHC Normal)
Departure Angle	26 degrees (AHC High)/23 degrees (AHC Normal)
Cargo Capacity (max)	90.4 cubic feet ¹ (middle seats folded, third-row seats removed)
Curb Weight	5,590 lb (2,535 kg)
Tow Capacity (max)	6,500 lbs (2,948 kg) (with available tow-hitch receiver) ¹¹
Fuel-Tank Capacity	25.4 gallons (96 L)
Headroom	39.1/38.9/36.3 in (993/988/922 mm) (front/middle/third row)
Legroom	42.3/34.3/27.3 in (1074/870/693 mm) (front/middle/third row)
Shoulder Room	61.3/61.1/61.1 in (1558/1552/1552 mm) (front/middle/third row)



*Measurement of vehicle in AHC Normal setting.
^{1,8,11} See page 16 for more information.



2006 LEXUS LX Specifications (Continued)

CHASSIS

Vehicle Stability Control (VSC) ^B	Electronic system that monitors and helps control the loss of traction in a turn by using yaw-rate, deceleration, vehicle-speed and steering-wheel-angle sensors. Modulates engine power and applies individual brakes as necessary. Integrates Anti-lock Braking System (ABS), Brake Assist ⁷ and Active Traction Control (A-TRAC).
Suspension	Front: Independent, double-wishbone with torsion bars, electronically controlled shock absorbers, and stabilizer bar. Rear: Live axle with coil springs, electronically controlled shock absorbers, and stabilizer bar. Adaptive Variable Suspension (AVS) with Adjustable Height Control (AHC) and automatic load leveling.
Steering	Variable Gear-Ratio Steering (VGRS), 2.4 turns, lock to lock. Engine-speed-sensing, progressive power-assisted rack-and-pinion.
Brakes	Four-wheel ventilated, power-assisted discs, with four-sensor, four-channel Anti-lock Braking System (ABS) with Electronic Brakeforce Distribution (EBD) and Brake Assist. ⁷ 12.2-in front, 12.8-in rear ventilated discs
Wheels and Tires	18 x 8.0-in alloy wheels. 275/60HR18 mud- and snow-rated, steel-belted radial tires. Full-size spare with alloy wheel.

PERFORMANCE

0-60 MPH Acceleration	8.9 seconds*
1/4 Mile Acceleration	16.6 seconds*
Top Track Speed	112 mph (electronically limited)*
Estimated Fuel Consumption	13/17 mpg city/highway [†]
Aerodynamic Drag Coefficient	0.40
Turning Circle	39.7 ft

LUXURY

Golden bird's-eye maple interior trim • Leather-trimmed interior • Wood- and leather-trimmed steering wheel and shift knob • Steering-wheel-mounted cruise control and audio controls • Power tilt-and-telescopic steering column with automatic tilt-away • Lexus voice-activated DVD Navigation System³ with backup camera⁴ and Bluetooth[®] technology¹³ • Mark Levinson² 11-speaker 240-watt[‡] Premium Audio System with Automatic Sound Levelizer (ASL) and six-disc CD auto-changer • Lexus Rear-Seat Audio System (RSAS) • Available Lexus DVD Rear-Seat Entertainment System (RSES) • Power mast antenna with adjustable height and FM-diversity system • 10-way driver's and front passenger's (including lumbar) power seats • Heated front seats • Lexus Memory System to control power driver's seat (except lumbar), outside mirrors and steering wheel • Reclining/folding split middle seat • Folding/removable split third-row seat • Automatic front/rear climate control with interior air filter, smog sensor and automatic recirculation mode • Power tilt-and-slide moonroof with one-touch open/close and sliding sunshade • Power windows with one-touch auto open/close • Power rear quarter windows • Remote-linked window and moonroof opening • Retained accessory power for windows and moonroof • Electrochromic (auto-dimming) inside rearview mirror and outside mirrors • Power door locks with auto lock/unlock, anti-lockout feature and driver's two-turn unlock feature • Dual-compartment center console with accessory power outlet • HomeLink[®] universal transceiver to operate compatible garage, gate, home lighting and home security systems • Lexus Personalized Settings (LPS)¹⁴ to personalize electronic functions • Auto on/off projector-beam halogen headlamps • Multifunction, in-key remote entry system with rolling-code technology • Available roof rack with CrossBars¹⁰ • Running boards with built-in courtesy lights • Outside temperature gauge • Trip computer

SAFETY AND SECURITY

Driver's and front passenger's dual-stage airbag system (SRS)⁶ • Front seat-mounted side airbags (SRS)⁶ • Front- and middle-row Roll-Sensing Curtain Airbags (RSCA) (SRS)⁶ • Three-point seatbelts for front, middle and outboard third-row with height-adjustable anchors, lap-belt for third-row center • Front seatbelt pre-tensioners and force limiters • Automatic Locking Retractor/ Emergency Locking Retractor (ALR/ELR) seatbelts for all passenger seating positions (except third-row center) • Emergency Locking Retractor (ELR) for driver's seat • Child Restraint Seat (CRS) tether anchor brackets for middle row, left and center • Four-wheel ventilated power-assisted disc brakes • Four-sensor, four-channel Anti-lock Braking System (ABS) • Vehicle Stability Control (VSC)^B • Four-wheel Active Traction Control (A-TRAC) • Brake Assist⁷ • Electronic Brakeforce Distribution (EBD) • Lexus four-sensor Tire Pressure Monitor System¹² • Available Lexus Night View⁹ • Full-time four-wheel drive with locking center differential • Highly rigid body structure with front and rear crumple zones • Reinforced ladder-type frame • Side-impact door beams • Impact-dissipating upper interior trim • Collapsible steering column • Daytime running lights • Integrated projector-beam foglamps • LED taillamps • Rain-sensing variable intermittent windshield wipers with mist cycle • Intermittent rear-window wiper with washer • Rear-window defogger with auto-off timer • Vehicle theft-deterrent and engine immobilizer system, with in-key transponder • Maintenance indicator light • First aid kit • Tool kit

*These performance capacity figures are for comparison only, and were obtained with prototype vehicles by professional drivers using special safety equipment and procedures. Do not attempt.

[†]Preliminary mileage estimates determined by Lexus. EPA mileage estimates not available at time of posting.

Actual mileage may vary.

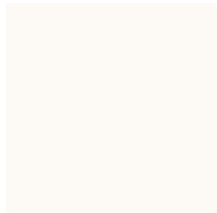
[‡]Continuous average power, all channels driven at 0.01%THD; 20-20,000 Hz.

^{2, 3, 4, 6, 7, 8, 9, 10, 12, 13, 14} See page 16 for more information.

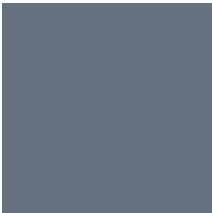


2006 LEXUS LX Colors & Warranty

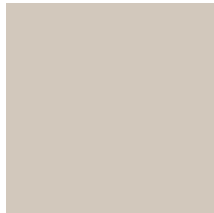
EXTERIOR COLORS



CRYSTAL WHITE
Ivory or Stone Leather



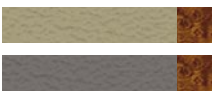
GALACTIC GRAY MICA
Ivory or Stone Leather



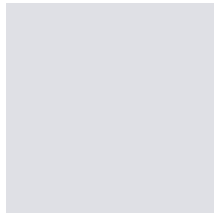
SAND DOLLAR PEARL
Ivory Leather



CYPRESS PEARL
Ivory Leather



BLACK ONYX
Ivory or Stone Leather

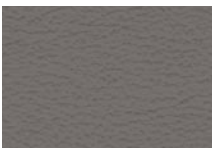


CLASSIC SILVER METALLIC
Ivory or Stone Leather

INTERIOR COLORS

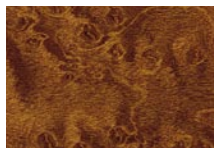


Ivory Leather



Stone Leather

WOOD TRIM



Golden Bird's-Eye Maple

See your Lexus dealer for exact vehicle colors.

WARRANTY

Four-year/50,000-mile Lexus Limited Warranty. Six-year/70,000-mile Powertrain Warranty. Six-year/unlimited-mileage Corrosion Perforation Warranty. All warranties with zero deductible. See the LX *Owner's Manual Supplement* at your Lexus dealer for details.

FOOTNOTES & DISCLAIMERS

1. Cargo and load capacity limited by weight and distribution. 2. Mark Levinson is a registered trademark of Harman International Industries. 3. The Lexus voice-activated DVD Navigation System is designed to assist in locating an address or point of interest. Discrepancies may be encountered between the system and your actual location. Changes in street names, road closures, traffic flow or other road system changes may affect the accuracy of the mapping software. Rely upon your common sense to decide whether or not to follow a specified route. Detailed coverage not available in every city. Optional periodic geographic updates available at an additional cost. See your *Navigation System Owner's Manual* and your Lexus dealer for further details. 4. The backup camera does not provide a comprehensive view of the entire rear area of the vehicle. You should also look around outside your vehicle and use your mirrors to confirm rearward clearance. Cold weather will limit effectiveness and view may become cloudy. 5. Headphones are for passenger use only. Do not use while operating vehicle. 6. The Lexus driver's and front passenger's airbags, front seat-mounted side airbags and side curtain airbags are Supplemental Restraint Systems (SRS). The driver's and front passenger's airbags are designed to deploy in severe (usually frontal) collisions where the magnitude and duration of the forward deceleration of the vehicle exceed the design threshold level. The side airbags and side curtain airbags are designed to deploy in certain types of severe side-impact collisions. The side curtain airbags are Roll-Sensing Curtain Airbags (RSCA) and are designed to deploy at a severe tilt degree, roll or lateral G-force. In all other accidents, the airbags will not deploy. To decrease the risk of injury from a deploying airbag, always wear your seatbelt, sit upright in the middle of the seat, and do not lean against the door. Do not put objects in front of an airbag or around the seatback. Do not use a rearward-facing child seat in any front passenger seat. The force of a deploying airbag SRS may cause serious injury or death. Please see your *Owner's Manual* for further instructions. 7. Brake Assist is designed to help the driver take full advantage of the benefits of ABS. It is not a substitute for safe driving practices. Braking effectiveness also depends on proper brake-system maintenance and tire and road conditions. 8. Lexus Vehicle Stability Control (VSC) is an electronic system designed to help the driver maintain vehicle control under adverse conditions. It is not a substitute for safe driving practices. Factors including speed, road conditions and driver steering input can all affect whether VSC will be effective in a loss of control. Please see your *Owner's Manual* for further details. 9. Lexus Night View is designed to alert the driver of objects beyond the projected light of the low-beam headlights. Driver should only glance at image occasionally. Factors including cold weather and the vehicle's air conditioner may limit the effectiveness of the system. 10. Roof rack with CrossBars is not recommended for luggage. 11. Before towing, confirm your vehicle and trailer are compatible, hooked up properly and you have any necessary additional equipment. The factory-installed hitch receiver on LX should only be used with weight-carrying hitch hardware, not weight-distributing hitch hardware. Do not exceed any weight ratings and follow all instructions and cautions from your trailer-hitch manufacturer and vehicle *Owner's Manual*. The maximum amount you can tow depends on the total weight of any cargo, occupants and available equipment. 12. The Lexus Tire Pressure Monitor System alerts the driver when tire pressure is critically low. For optimal tire wear and performance, tire pressure should be checked regularly with a gauge; do not rely only on the monitor system. See your *Owner's Manual* for details. 13. While there are several Bluetooth phones in the market, Lexus recommends the phones listed on its Web site because they have been tested and meet Lexus' high standards for voice quality and functionality. Note that the recommendation of Lexus is not a warranty of the performance for any phone and that some problems may occur with any type of handset based on the service coverage available in your area. 14. The Lexus Personalized Settings (LPS) Program is a one-time, complimentary offer for new 2005 model year vehicles purchased or leased from 10/1/04 and beyond, as well as 2006 model year vehicles, up to 12 months from the date the vehicle is sold to the first retail purchaser or the date it is first used as a demonstrator, lease, or company car, whichever occurs first. Please see your Lexus dealer for more information.

Specifications, features, equipment, technical data, performance figures, options, and color and trim are based upon information available at time of posting, are subject to change without notice, are for mainland U.S.A. vehicles and may differ in the state of Hawaii, Puerto Rico, the U.S. Virgin Islands and in other regions.

Some vehicles shown with optional equipment. Optional equipment listed may not be available separately or in all regions. See your Lexus dealer for details. Lexus reminds you to wear seatbelts, secure children in rear seat, obey all traffic laws and drive responsibly.

For more information, call 800-USA-LEXUS (872-5398). To learn more about your financing options, contact your Lexus dealer or call Lexus Financial Services at 800-874-7050.

All photographs appearing in this e-brochure are the copyrighted property of the photographers contracted by or on behalf of Lexus and may not be reproduced in any way whatsoever without prior written permission from both Lexus and the applicable photographer(s) or their authorized agent(s).

