

Altima 3.5 SE shown in Radiant Silver with optional equipment. Standard splash guards not shown.

PRINTED EXCLUSIVELY FOR

2009 NISSAN ALTIMA

BRILLIANCE IN MOTION. Find genius at your fingertips. Push Button Ignition to rouse a potent 270-hp V6. The outstanding response of a groundbreaking intelligent CVT transmission. Touch-screen navigation¹ with live traffic reporting to ease you through your daily commute. Nissan Intelligent Key™ and Bluetooth® to keep your hands exactly where you want them – on the wheel of one of the most exhilarating sedans on the road.

¹ Never program while driving. GPS mapping may not be detailed in all areas or reflect current road regulations. Navigation System is inoperable in Hawaii and Alaska. It is operational in the contiguous 48 states and Canada.



FIVE EXCEPTIONAL NISSAN ALTIMA CHOICES



2.5: TURNS HEADS



2.5 S: UNCOMMONLY EQUIPPED



3.5 SE: A MODEL OF ADVANCEMENT



3.5 SL: THE REFINED CHOICE



HYBRID: THE FIRST HYBRID THAT DRIVES LIKE A NISSAN

FEATURES

	2.5	2.5 S	3.5 SE	3.5 SL	HYBRID ¹	
EXTERIOR	Automatic on/off headlights	C			C	
	High Intensity Discharge (HID) xenon headlights		S			
	Fog lights	AC ²	S			
	Rear spoiler	AC ²	S		C	
	Dual exhaust with chrome exhaust-tip finishers					
	Dual body-color power outside mirrors					
	Folding outside mirrors with turn signal indicators					CO
	Heated outside mirrors with timer					CO
	Power-sliding glass moonroof with tilt feature	CP		T ³		
	AUDIO	AM/FM/CD audio system with 6 speakers				
Digital Bose® audio system with AM/FM/in-dash and 6-CD changer with 9 speakers		CO	P		CO	
Radio Data System (RDS); speed-sensitive volume control		CO	P		CO	
Illuminated steering wheel-mounted audio controls		C			C	
MP3/WMA CD playback capability		CO	P		CO	
Auxiliary audio input jack ³						
XM® Satellite Radio ⁴		CO	P		CO	
INTERIOR	Nissan Intelligent Key™ with Push Button Ignition					
	Nissan Navigation System with 6.5" touch-screen monitor and voice recognition	T	T	T	T	
	XM NavTraffic ⁴	T	T	T	T	
	Bluetooth® Hands-free Phone System	CO	P		CO	
	HomeLink® Universal Transceiver	SL	P		CO	
	RearView Monitor ⁵	T	T	T	T	
	Air conditioning with in-cabin microfilter					
	Dual Zone Automatic Temperature Control (ATC)	CO	P			
	Power windows and door locks					
	Passenger-side front window one-touch auto-up/down	C			C	
	Remote keyless entry with trunk release					
	Remote keyless front windows down	C			C	
	Cruise control with steering wheel-mounted controls					
	Fine Vision electroluminescent gauges					
	Multi-functional trip computer					
	Tilt and telescoping steering column					
	Vehicle-speed-sensitive variable intermittent wipers					
	Dual illuminated visor vanity mirrors with extenders	C			C	
	Nine cupholders (eight with manual transmission)					
Overhead sunglasses storage						
Auto-dimming inside rearview mirror with compass	SL	P		CO		
Two 12-volt DC power outlets						
SEATING/APPOINTMENTS	6-way manual adjustable driver's seat					
	8-way power adjustable driver's seat		C		C	
	Driver's seat power adjustable lumbar support		SL	P	CO	
	Velour cloth seat trim					
	Leather-appointed seats and door trim		SL	P	CO	
	Heated front seats		SL	P	CO	
	Leather-wrapped steering wheel		C		C	
	Leather-wrapped shift knob		SL	P	CO	
	Wood-tone trim (Blond only)		C		C	
	Metallic trim (Frost and Charcoal cloth only)					
	Premium metallic trim (Frost and Charcoal leather only)		SL	P	CO	
	60/40-split fold-down rear seatbacks with lock					
	Trunk side cargo net		C		C	
	Carpeted trunk lid trim					
SAFETY/SECURITY	Nissan Advanced Air Bag System with dual-stage supplemental front air bags with seat-belt and occupant classification sensors					
	Driver and front-passenger seat-mounted side-impact supplemental air bag					
	Roof-mounted curtain side-impact supplemental air bags for front- and rear-seat outboard occupants head protection					
	Traction Control System (TCS)					
	Vehicle Dynamic Control (VDC) ⁶			S	V ⁷	
	3-point ALR/ELR passenger seat belt system (ELR for driver)					
	Front seat belts with pretensioners and load limiters					
	Front-seat Active Head Restraints					
	LATCH System (Lower Anchors and Tethers for Children)					
	Zone Body construction with front and rear crumple zones					
	Hood buckling creases and pipe-style steel side-door guard beams					
	Energy-absorbing steering column					
	Nissan Vehicle Immobilizer System					
Vehicle security system						

Standard
 Optional
 Part of Convenience Package
 Part of Convenience Plus Package
 Part of Connection Package
 Part of 2.5 SL Package
 Part of 3.5 SE Sport Package
 Part of 3.5 SE Premium Package
 Part of Technology Package

¹ Altima Hybrid is available in CA, NY, MA, CT, VT, OR, RI, ME, and NJ. Service of hybrid components outside those states is limited and could involve some days delay. ² Required with Technology Package. ³ Moonroof Package requires 3.5 SE Sport Package on 3.5 SE. Hybrid models require Convenience Package, Connection Package or Technology Package. ⁴ Required XM and XM NavTraffic monthly subscriptions sold separately after a three-month trial period. Installation costs and other fees and taxes may apply, including a one-time activation fee. XM NavTraffic only available in select markets. Subscription fee is consumer only. All fees and programming subject to change. Subscriptions subject to Customer Agreement available at xmradio.com. XM service only available in the 48 contiguous United States and Canada. The XM name and XM NavTraffic are registered trademarks of XM Satellite Radio Inc. ©2008 XM Satellite Radio Inc. All rights reserved. All other trademarks are the property of their respective owners. ⁵ The optional RearView Monitor is a convenience, but not a substitute for proper backing procedures. Always turn and check that it is safe to do so before backing up. The RearView Monitor may not detect every accident behind you. ⁶ VDC cannot prevent accidents due to abrupt steering, carelessness, or dangerous driving techniques. Always drive safely. ⁷ VDC option requires Technology Package on 3.5 SL. ⁸ Bose is a registered trademark of The Bose Corporation. ⁹ The Bluetooth word mark and logos are owned by Bluetooth SIG, Inc., and any use of such marks by Nissan is under license. ¹⁰ HomeLink is a registered trademark of Johnson Controls Technology Company.

PACKAGES

☑ CONVENIENCE PACKAGE

Automatic on/off headlights
8-way power adjustable driver's seat
Passenger-side front-window one-touch auto-up/down
Remote front windows down
Key-operated front windows up/down
Dual illuminated visor vanity mirrors with sun visor extenders
Leather-wrapped steering wheel
Steering wheel-mounted audio controls
Wood-tone trim (Blond interior only)
Side cargo net
Rear spoiler (Hybrid)

☑ CONVENIENCE PLUS PACKAGE

16" Aluminum-alloy wheels
Power sliding glass moonroof with tilt feature
Requires Convenience Package.

☑ 2.5 SL PACKAGE

Leather-appointed seats and heated front seats
Driver's seat power lumbar support
Leather-wrapped shift knob
HomeLink® Universal Transceiver
Auto-dimming inside rearview mirror with compass
Illuminated center console
Premium metallic trim (Frost and Charcoal interior only)
Requires Convenience Plus Package.

☑ CONNECTION PACKAGE

Bluetooth® Hands-free Phone System
Digital Bose® audio system with in-dash 6-CD changer
XM® Satellite Radio¹ and MP3/WMA CD playback capability
Radio Data System (RDS) and speed-sensitive volume control
Dual Zone Automatic Temperature Control (standard on Hybrid)
Rear-passenger air conditioning vents
Folding outside mirrors with turn signal indicators (Hybrid)
Leather-appointed seats and heated front seats (Hybrid)

Leather-wrapped shift knob (Hybrid)
Driver's seat power lumbar support (Hybrid)
HomeLink® Universal Transceiver (Hybrid)
Auto-dimming inside rearview mirror with compass (Hybrid)
Illuminated center console (Hybrid)
Premium metallic trim (Hybrid) (Charcoal interior only)
Requires Convenience Package on 2.5 S and Hybrid models.

☑ 3.5 SE SPORT PACKAGE

Fog lights and rear spoiler
High Intensity Discharge (HID) xenon headlights
Vehicle Dynamic Control²

☑ 3.5 SE PREMIUM PACKAGE

Leather-appointed seats and heated front seats
Driver's seat power lumbar support
Bluetooth® Hands-free Phone System
Digital Bose® audio system with in-dash 6-CD changer
XM® Satellite Radio¹ and MP3/WMA CD playback capability
Radio Data System (RDS) and speed-sensitive volume control
Dual Zone Automatic Temperature Control
Rear passenger air conditioning vents
HomeLink® Universal Transceiver
Auto-dimming inside rearview mirror with compass
Leather-wrapped shift knob
Illuminated center console
Premium metallic trim (Charcoal interior only)
Requires moonroof on 3.5 SE manual transmission model.

☑ TECHNOLOGY PACKAGE

Nissan Navigation System with XM NavTraffic®¹
RearView Monitor³
Energy flow monitor and energy/fuel history monitor (Hybrid)
Requires Connection Package and 2.5 SL Package on 2.5 S,
3.5 SE Premium Package on 3.5 SE, VDC Option on 3.5 SL,
and Connection Package on Hybrid.

SPECIFICATIONS

ENGINES

2.5-liter DOHC 16-valve 4-cylinder engine
Horsepower – 175 hp @ 5,600 rpm⁵
Torque – 180 lb-ft @ 3,900 rpm⁵

3.5-liter DOHC 24-valve V6 engine
Horsepower – 270 hp @ 6,000 rpm
Torque – 258 lb-ft @ 4,400 rpm

Hybrid System Net Power – 198 hp (148 kw)
QR25DE – 2.5-liter DOHC 16-valve 4-cylinder
Horsepower – 158 hp @ 5,200–6,000 rpm
Torque – 162 lb-ft @ 2,800–4,800 rpm
Permanent magnet AC synchronous electric motor
199 lb-ft @ 0–1,500 rpm (105 kw @ 4,500 rpm)
Voltage – 650 V maximum
Sealed Nickel-Metal Hydride (Ni-MH) Battery
40 hp (30 kw)
Voltage 244.8 V

DRIVETRAIN

Front engine/front-wheel drive
6-speed manual transmission (2.5 S, 3.5 SE)
Xtronic CVT™ (Continuously Variable Transmission) with manual mode (standard on 2.5 S, 3.5 SL; optional on 3.5 SE)
Electronically controlled Continuously Variable Transmission (eCVT) (Hybrid)

WHEELS AND TIRES

16" x 7" Steel wheels with bolt-on wheel covers (2.5, 2.5 S)
16" x 7" 6-spoke aluminum-alloy wheels (part of ☑ on 2.5 S; standard on 3.5 SL and Hybrid)
17" x 7.5" 5-spoke aluminum-alloy wheels (3.5 SE)
P215/60R16 tires (2.5, 2.5 S, 3.5 SL, Hybrid)
P215/55VR17 tires (3.5 SE)

SUSPENSION AND BRAKES

Front: Independent subframe-mounted strut-type
Rear: Multi-link independent
Sport-tuned suspension (3.5 SE)
11.7" Front vented disc/11.5" rear disc brakes
4-wheel Anti-lock Braking System (ABS) with Electronic Brake force Distribution (EBD)

WARRANTY

Every Nissan is backed by a 36-month/36,000-mile limited vehicle coverage and a 5-year/60,000-mile limited powertrain coverage. (For complete information, see your Nissan dealer and read the actual limited warranty.) For extra protection, you can also add Security+Plus® the only extended service agreement approved by Nissan.

Choose a dealer to buy your Nissan Altima:

MOSSY NISSAN OCEANSIDE
3535 COLLEGE BLVD
OCEANSIDE, CA 92056
(760) 720-9797

MOSSY NISSAN POWAY
14100 POWAY RD
POWAY, CA 92064
(858) 668-3600

MOSSY NISSAN ESCONDIDO
1546 AUTO PARK WAY
ESCONDIDO, CA 92029
(760) 746-5050

QUALITY NISSAN OF TEMECULA
41895 MOTOR CAR PKWY
TEMECULA, CA 92591
(951) 676-6601



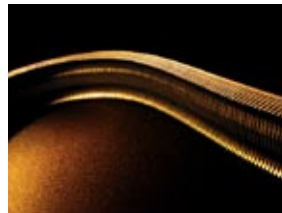
Altima's Push Button Ignition combines with the wireless Nissan Intelligent Key™ to start the vehicle without ever removing the key from your pocket or purse.

Altima's available Bose® audio system > features a 6-disc in-dash changer with MP3/WMA capability, an auxiliary input⁴, and optional satellite radio¹.



< The Bluetooth® Hands-free Phone System teams up with your Bluetooth-enabled phone for advanced communication: make or receive calls, record voice messages, even store up to 70 telephone numbers.

Altima's intelligent CVT (Continuously > Variable Transmission) offers optimal power, and remarkable smoothness. Plus no shift shock.



< Use Altima's available navigation system with touch-screen functionality and hands-free voice activation to get directions, choose from over 5-million points of interest, store up to 100 destinations in the address book, or activate voice guidance to announce your way home.



¹ Required XM and XM NavTraffic monthly subscriptions sold separately after a three-month trial period. Installation costs and other fees and taxes may apply, including a one-time activation fee. XM NavTraffic only available in select markets. Subscription fee is consumer only. All fees and programming subject to change. Subscriptions subject to Customer Agreement available at xmradio.com. XM service only available in the 48 contiguous United States and Canada. The XM name and XM NavTraffic are registered trademarks of XM Satellite Radio Inc. © 2008 XM Satellite Radio Inc. All rights reserved. All other trademarks are the property of their respective owners. ² VDC cannot prevent accidents due to abrupt steering, carelessness, or dangerous driving techniques. Always drive safely. ³ The optional RearView Monitor is a convenience, but not a substitute for proper backing procedures. Always turn and check that is safe to do so before backing up. The RearView Monitor may not detect every object behind you. ⁴ Driving is serious business and requires your full attention. Do not operate any devices connected to the auxiliary audio input jack while driving. ⁵ CAL emissions (PZEV) equipment causes nominal reductions in horsepower (from 175 to 170 hp) and torque (from 180 lb-ft to 175 lb-ft). PZEV vehicles are available in California and some northeastern states. © HomeLink is a registered trademark of Johnson Controls Technology Company. © The Bluetooth word mark and logos are owned by Bluetooth SIG, Inc., and any use of such marks by Nissan is under license. © Bose is a registered trademark of The Bose Corporation.

All illustrations, photographs, and specifications in this publication are based on the latest product information available at the time of printing. Some vehicles shown with optional equipment. See the actual vehicle for complete accuracy. Availability and delivery times for particular models or equipment may vary. Nissan North America, Inc. reserves the right to make changes at any time, without prior notice, in prices, colors, materials, equipment, specifications, and models, and to discontinue models or equipment. Specifications, options, and accessories may differ in Hawaii, U.S. territories, and other countries. For additional information on availability, options, or accessories, see your Nissan dealer. The Nissan names, logos, product names, feature names, and slogans are trademarks owned by or licensed to Nissan North America, Inc. and/or its North American subsidiaries. Always wear your seat belt, and please don't drink and drive. © 2007 Nissan North America, Inc.



Altima Coupe 3.5 SE shown in Code Red.

PRINTED EXCLUSIVELY FOR

2009 NISSAN ALTIMA COUPE

TRUE PERFORMANCE HAS ARRIVED. The attraction is inevitable. Starting with two doors and the push of a button. 270 horses delivered as only Nissan can. A new benchmark has been set, defying what was by boldly offering what's next. An intelligent CVT transmission. And bold technology to guide your every desire. Your world on a navigation system so advanced, smart never felt this easy. The 2009 Nissan Altima Coupe.



TWO EXCEPTIONAL NISSAN ALTIMA COUPE CHOICES



2.5 S: UNCOMMONLY EQUIPPED



3.5 SE: A MODEL OF ADVANCEMENT

FEATURES

	2.5 S	3.5 SE		2.5 S	3.5 SE
EXTERIOR	Automatic on/off headlights	C			
	High Intensity Discharge (HID) xenon headlights		PP		
	Fog lights	1			
	Dual body-color power outside mirrors				
	Folding outside mirrors with LED turn signal indicators				
	Heated outside mirrors with timer				
	Power sliding glass moonroof with tilt feature	M, P			
	Dual exhaust with chrome exhaust-tip finishers				
UV-reducing solar glass					
AUDIO	AM/FM/CD audio system with 6 speakers				
	Digital Bose® audio system with AM/FM/in-dash 6-CD changer and 9 speakers (including 2 subwoofers)	P	PP		
	Radio Data System (RDS) and speed-compensating volume	P	PP		
	MP3/WMA CD playback capability	P	PP		
	XM® Satellite Radio ² – includes activation and 3 months of service	P	PP		
	Illuminated steering wheel-activated audio controls	C			
	Auxiliary audio input jack ³				
	Diversity antenna				
INTERIOR	Nissan Intelligent Key™ with Push Button Ignition				
	Nissan Navigation System with DVD atlas, 6.5" color touch-screen monitor and voice recognition ⁴	T	T		
	XM NavTraffic ^{®2} – includes activation and 3 months of service	T	T		
	RearView Monitor ⁵	P	T		
	Bluetooth® Hands-free Phone System	P	PP		
	Homelink® Universal Transceiver	P	PP		
	Air conditioning with in-cabin microfilter				
	Dual Zone Automatic Temperature Control (ATC) with in-cabin microfilter	P	PP		
	Power windows and door locks with auto-locking feature				
	Passenger-side front window one-touch auto-up/down	C			
	Remote keyless entry with trunk release				
	Remote windows down	C			
	Cruise control with steering wheel-mounted controls				
	Fine Vision electroluminescent gauges				
	Multi-functional trip computer with outside temperature gauge				
	Tilt and telescoping steering column				
	Vehicle-speed-sensitive variable intermittent flat blade windshield wipers				
Dual illuminated visor vanity mirrors with sun visor extenders	C				
Auto-dimming inside rearview mirror with compass	P	PP			
Overhead sunglasses storage					
12-volt DC power outlets (2)					
Illuminated center console	P	PP			
Trunk side storage net	C				
SEATING/APPOINTMENTS	6-way manual adjustable driver's seat				
	8-way power adjustable driver's seat	C			
	Driver's adjustable lumbar support	C			
	Leather-appointed seats and door trim	P	PP		
	Heated front seats	P	PP		
	Leather-wrapped steering wheel	C			
	Leather-wrapped shift knob	P	PP		
	Wood-tone trim (Blond interior only)	C			
	Metallic trim (Charcoal cloth interior only)				
	Premium metallic trim (Charcoal leather interior only)	P	PP		
	In-board passenger fold/release lever with memory/return feature				
	60/40-split fold-down rear seats				
SAFETY/SECURITY	Nissan Advanced Air Bag System with dual-stage supplemental front air bags with seat belt and occupant classification sensors				
	Driver and front-passenger seat-mounted side-impact supplemental air bags				
	Roof-mounted curtain side-impact supplemental air bags for front and rear-seat outboard occupant head protection				
	Traction Control System (TCS)				
	Vehicle Dynamic Control (VDC) ⁶		V		
	3-point ALR/ELR passenger seat belt system (ELR for driver)				
	Front seat belts with pretensioners and load limiters				
	Front-seat Active Head Restraints				
	LATCH System (Lower Anchors and Tethers for CHildren)				
	Zone Body construction with front and rear crumple zones				
	Hood buckling creases and pipe-style steel side-door guard beams				
	Tire Pressure Monitoring System (TPMS)				
Energy-absorbing steering column					
Nissan Vehicle Immobilizer System					
Vehicle Security System					

- Standard
- Optional
- C Part of Convenience Package
- P Part of 2.5 S Premium Package
- PP Part of 3.5 SE Premium Package
- M Part of 2.5 S Moonroof Package
- T Part of Technology Package
- V Part of Vehicle Dynamic Control option

¹ Requires 2.5 S Premium Package. ² Required XM radio and XM NavTraffic monthly subscriptions sold separately after trial period. Installation costs and other fees and taxes may apply, including a one-time activation fee. XM NavTraffic only available in select markets. Subscription fee is consumer only. All fees and programming subject to change. Subscriptions subject to Customer Agreement available at xmradio.com. XM service only available in the 48 contiguous United States and Canada. The XM name and XM NavTraffic are registered trademarks of XM Satellite Radio Inc. ©2008 XM Satellite Radio Inc. All rights reserved. All other trademarks are the property of their respective owners. ³ Driving is serious business and requires your full attention. Do not operate any devices connected to the auxiliary audio input jack while driving. ⁴ This option deletes digital compass in rearview mirror. ⁵ The optional RearView Monitor is a convenience, but is not a substitute for proper backing procedures. Always turn and check that it is safe to do so before backing up. The RearView Monitor may not detect every object behind you. ⁶ VDC cannot prevent accidents due to abrupt steering, carelessness, or dangerous driving techniques. Always drive carefully. ® Bose is a registered trademark of The Bose Corporation. ® The Bluetooth word mark and logos are owned by Bluetooth SIG, Inc., and any use of such marks by Nissan is under license. ® HomeLink is a registered trademark of Johnson Controls Technology Company.

PACKAGES

2.5 S CONVENIENCE PACKAGE

16" Aluminum-alloy wheels
Automatic on/off headlights
8-way power adjustable driver's seat with lumbar support
Passenger-side front-window one-touch auto-up/down with auto-reverse
Remote front windows down
Key-operated front windows up/down
Dual illuminated visor vanity mirrors with sun visor extenders
Leather-wrapped steering wheel
Steering wheel-mounted audio controls
Wood-tone trim (Blond interior only)
Trunk side storage net

2.5 S PREMIUM PACKAGE

Power sliding glass moonroof with tilt feature
Leather-appointed seats and door trim
Leather-wrapped shift knob
Heated front seats
Bluetooth® Hands-free Phone System
Digital Bose® audio system with AM/FM/in-dash 6-CD changer and 9 speakers
XM® Satellite Radio¹ – includes activation and 3 months of service
MP3/WMA CD playback capability
Radio Data Service (RDS)
Speed-sensitive volume control
Dual Zone Automatic Temperature Control (ATC) with in-cabin microfilter
HomeLink® Universal Transceiver
Auto-dimming inside rearview mirror with compass
Illuminated center console
Premium metallic trim (Charcoal Leather interior only)
This package requires 2.5 S Convenience Package.

3.5 SE PREMIUM PACKAGE

High Intensity Discharge (HID) xenon headlights
Leather-appointed seats and door trim
Leather-wrapped shift knob
Heated front seats
Bluetooth® Hands-free Phone System
Digital Bose® audio system with AM/FM/in-dash 6-CD changer and 9 speakers
XM® Satellite Radio¹ – includes activation and 3 months of service
MP3/WMA CD playback capability
Radio Data Service (RDS)
Speed-sensitive volume control
Dual Zone Automatic Temperature Control (ATC) with in-cabin microfilter
HomeLink® Universal Transceiver
Auto-dimming inside rearview mirror with compass
Illuminated center console
Premium metallic trim (Charcoal Leather interior only)

TECHNOLOGY PACKAGE

Nissan Navigation System with DVD atlas, 6.5" color touch-screen monitor, and voice recognition
Steering wheel-mounted navigation menu controls
RearView Monitor²
XM NavTraffic®³ – includes activation and 3 months of service
Requires Premium Package on 2.5 S Premium Package or 3.5 SE Premium Package. This option deletes digital compass in rearview mirror.

2.5 S MOONROOF PACKAGE

Power sliding glass moonroof with one-touch open/close and tilt feature
This package requires 2.5 S Convenience Package.



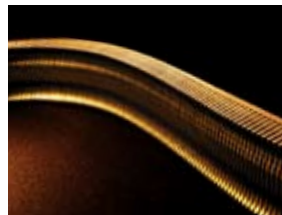
Altima's Push Button Ignition combines with the wireless Nissan Intelligent Key™ to start the vehicle without ever having to remove the key from your pocket or purse.

Altima's available Bose® audio system features a 6-disc in-dash changer with MP3/WMA capability, an auxiliary input, and optional satellite radio.



< The Bluetooth® Hands-free Phone System teams up with your Bluetooth-enabled phone for advanced communication: make or receive calls, record voice messages, even store up to 40 telephone numbers.

An intelligent CVT (Continuously Variable Transmission) offers optimal power and remarkable smoothness. Plus no shift shock.



< Use Altima's available navigation system with touch-screen functionality and hands-free voice activation to get directions, choose from over 5-million points of interest, store up to 100 destinations in the address book, or activate voice guidance to announce your way home.

¹ Required XM radio and XM NavTraffic monthly subscriptions sold separately after a three-month trial period. Installation costs and other fees and taxes may apply, including a one-time activation fee. XM NavTraffic only available in select markets. Subscription fee is consumer only. All fees and programming subject to change. Subscriptions subject to Customer Agreement available at xmradio.com. XM service only available in the 48 contiguous United States and Canada. The XM name and XM NavTraffic are registered trademarks of XM Satellite Radio Inc. ©2008 XM Satellite Radio Inc. All rights reserved. All other trademarks are the property of their respective owners. ² The optional RearView Monitor is a convenience, but is not a substitute for proper backing procedures. Always turn and check that it is safe to do so before backing up. The RearView Monitor may not detect every object behind you. ³ CAL emissions (PZEV) equipment causes nominal reductions in horsepower (from 175 to 170 hp) and torque (from 180 lb-ft to 175 lb-ft). PZEV vehicles are available in California and some northeastern states. ® Bose is a registered trademark of The Bose Corporation. ® The Bluetooth word mark and logos are owned by Bluetooth SIG, Inc., and any use of such marks by Nissan is under license. ® HomeLink is a registered trademark of Johnson Controls Technology Company. ® Michelin is a registered trademark of Michelin North America, Inc.

All illustrations, photographs, and specifications in this publication are based on the latest product information available at the time of printing. Some vehicles shown with optional equipment. See the actual vehicle for complete accuracy. Availability and delivery times for particular models or equipment may vary. Nissan North America, Inc. reserves the right to make changes at any time, without prior notice, in prices, colors, materials, equipment, specifications, and models, and to discontinue models or equipment. Specifications, options, and accessories may differ in Hawaii, U.S. territories, and other countries. For additional information on availability, options, or accessories, see your Nissan dealer. The Nissan names, logos, product names, feature names, and slogans are trademarks owned by or licensed to Nissan Motor Co. Ltd. and/or its North American subsidiaries. Always wear your seat belt, and please don't drink and drive. ©2008 Nissan North America, Inc.

SPECIFICATIONS

ENGINES


2.5-liter DOHC 16-valve 4-cylinder engine
Horsepower – 175 hp³ @ 5,600 rpm
Torque – 180 lb-ft³ @ 3,900 rpm

3.5-liter DOHC 24-valve V6 engine
Horsepower – 270 hp @ 6,000 rpm
Torque – 258 lb-ft @ 4,400 rpm

DRIVETRAIN

Front engine/front-wheel drive
6-speed manual transmission
Optional: Xtronic CVT™ (Continuously Variable Transmission) with manual mode

WHEELS AND TIRES

16" x 7" Steel wheels with bolt-on wheel covers (2.5 S)
16" x 7" 6-spoke aluminum-alloy wheels (Part of  on 2.5 S)
18" x 8" 5 split-spoke aluminum-alloy wheels (3.5 SE)
P215/60R16 all-season tires (2.5 S)
P235/45R18 Michelin® all-season tires (3.5 SE)

SUSPENSION AND BRAKES

Front: Independent subframe-mounted strut-type
Rear: Multi-link independent
Front and rear stabilizer bars
Sport-tuned suspension – retuned front struts and thicker (24.2 mm) front stabilizer bar (3.5 SE)
11.7" Front vented disc/11.5" rear disc brakes
4-wheel Anti-lock Braking System (ABS) with Electronic Brake force Distribution (EBD)

WARRANTY

Every Nissan is backed by a 36-month/36,000-mile limited vehicle coverage and a 5-year/60,000-mile limited powertrain coverage. For complete information, see your Nissan dealer and read the actual limited warranty. For extra protection, you can also add Security+Plus®, the only extended service agreement approved by Nissan.

Choose a dealer to buy your Nissan Altima Coupe:

MOSSY NISSAN OCEANSIDE
3535 COLLEGE BLVD
OCEANSIDE, CA 92056
(760) 720-9797

MOSSY NISSAN POWAY
14100 POWAY RD
POWAY, CA 92064
(858) 668-3600

MOSSY NISSAN ESCONDIDO
1546 AUTO PARK WAY
ESCONDIDO, CA 92029
(760) 746-5050

QUALITY NISSAN OF TEMECULA
41895 MOTOR CAR PKWY
TEMECULA, CA 92591
(951) 676-6601