

LAND ROVER LR3

2008





Land Rover LR3 HSE in Zermatt Silver Metallic.

Cover: Land Rover LR3 HSE in Zermatt Silver Metallic.

Whether it's Monday morning in Moab or Saturday night in Whistler...



The product of 60 years of sport-utility leadership, the 2008 Land Rover LR3 is engineered to excel not just in conditions where only Land Rover vehicles roam, but also on the rain-slick highways and potholed urban canyons of everyday life. With acclaimed versatility and inimitable European design flair, LR3 provides a premium and refined driving experience plus the ability to accommodate an amazing combination of people and cargo.

The 2008 model year marks notable enhancements. All LR3 models accommodate up to seven adults and present an array of exceptional amenities, including a harman/kardon® audio system, leather trim and rain-sensing wipers. In short, LR3 is a worthy travelling companion for your everyday life... no matter where in the world life takes you.



Land Rover LR3 SE in Zermatt Silver Metallic.



Land Rover LR3 HSE in Zermatt Silver Metallic.

A luxuriously sensible interior that appeals to the senses.

Open the door and get in. LR3 welcomes you with a level of refinement that will appeal to your senses, as well as your sense of style.



Brilliant Highlights

Following a tradition of intelligent and practical design, LR3 exhibits a unique aesthetic with premium materials and thoughtful attention to detail. Consider the visual and tactile appeal of the Brunel Metallic highlights gracing the central console and the end caps of the instrument panel. For a touch of brilliance, the climate control vents, gearshift lever and glovebox handle have all received special Noble plating. In contrast, the ebony-hued central panel housing the audio and climate controls lends a subtle cosmopolitan air.

Elegance Abounds

The top-of-the-line HSE model enhances an already handsome interior with satin-finish Straight-Grained Walnut Wood trim or, at no additional cost, Grand Black Lacquer Wood trim. Select the optional Luxury Package for truly opulent "gathered" leather seating surfaces, and a matching leather-clad lid for the cubby box, which also receives a built-in Cooler Box for on-the-go convenience. Blending traditional elegance with modern ergonomics, the LR3 is designed to engage your sense and sensibility.

Luxury Package seating shown.



Discover inner space.

A night on the town or doing yeoman duty for your kids and their friends – the LR3 can easily handle both with comfort and style.





Third-Row Seats, First-Class Accommodations

Optional seating for up to seven adults makes LR3 an ideal conveyance for friends and family, whether it's around the block or around the province. The third row is very commodious – it was designed for two 6-foot friends to ride there comfortably.

Rear Seat Climate (RSC) model has separate rear-seat climate controls so all three rows of people can tailor the interior temperature to their preferences.



Utility Onboard

Think of the possibilities of people and cargo that you can accommodate. In fact, Land Rover engineers did – there are more than 100* different seating and cargo configurations available to take on everything from an impromptu picnic to a wide-screen TV. Fold down a second-row seat and the

corresponding third-row seat* to make room for long objects, such as skis or lumber, and there's still room for the driver and four passengers. Fold down all the rear seats and marvel at a completely flat load surface for a cargo space that measures 2.56m.

*When equipped with optional third-row Rear Seat Package (RSP) or Rear Seat Climate (RSC) Package. Models shown with optional third-row seat.

Panoramic View

Every seat in the LR3 provides the perfect vantage point to take in your surroundings. There's even a good view overhead, thanks to the standard power sunroof above the front seats, and the fixed Alpine roof over the rear passengers.



Tale Of The Tailgate

For convenient cargo handling, the hallmark LR3 asymmetrical tailgate greatly enhances functionality. When the tailgate is up, the right side is lower, making it easier to lift items over it when loading. When the tailgate is down, the shorter right side lets you reach farther into the cargo area. It all adds up to one thing: Versatility.



All the comforts of home, quite frankly, may now rank second.

The list of LR3 conveniences is long – from power seats to Park Distance Control. Consider this gallery of amenities.*

Eight Ways To Comfort

To cater to the comfort of the driver and front-seat passenger, eight-way power adjustable seats are standard. In addition, drivers enjoy power lumbar support, and there's an available power-adjustable steering column to find the ideal position.** For those in cold climates (or for any chilly mornings), the standard Cold Climate Package provides heated front and second-row seats, plus a heated front windshield.

Fingertip Controls

Standard steering-wheel-mounted controls allow easy access to the audio system, Personal Telephone Integration (when equipped), cruise control and the trip computer.† Another notable convenience within easy reach is the one-touch control feature for both driver and front-passenger windows.

You, The Vehicle And Your Phone, Communicating

The available Personal Telephone Integration (PTI) system allows compatible Bluetooth® cell phones to interface with the vehicle, just by being onboard.***

Once engaged, PTI adds a hands-free mode, keypad dialing, steering-wheel controls and voice recognition. In fact, you can use voice controls to operate the audio system and navigation system, as well as the telephone.

Park By Ear

Even the best drivers can use a little assistance when parking in a tight space – that's where Park Distance Control (PDC) comes in. PDC audibly warns the driver when the vehicle gets close to objects when backing up at low speeds. A similar system is available for the front of the vehicle.†

Stadium Seating

Just because passengers are in a rear seat doesn't mean they have to take a back seat to visibility. Stadium seating, made possible by the signature stepped roof, places each row a little higher than the one in front, giving everyone an unimpeded view of the scenery. The standard Alpine roof, another hallmark of Land Rover design, opens up vistas overhead, as well.

* Some options are available only in combination with other options or specific models.

** Power-adjustable steering column is standard on HSE, not available on SE.

*** Retailer installation required on V6 models.



Some vehicles shown with optional equipment.

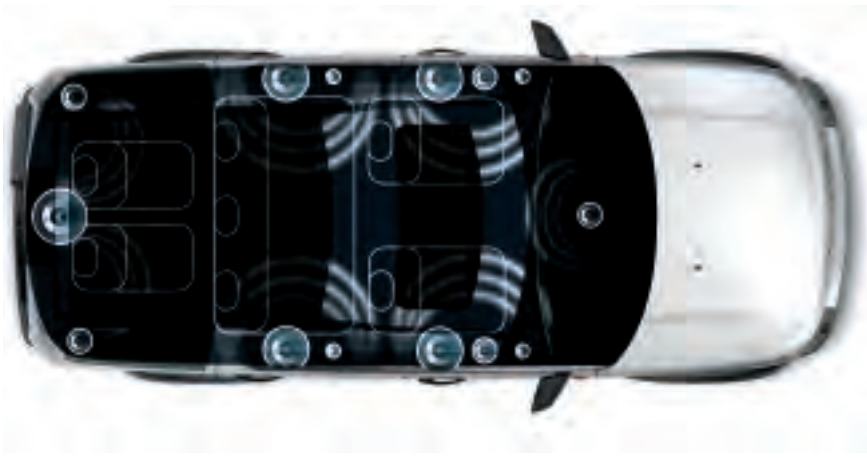


Land Rover LR3 HSE
Optional Luxury Package

Includes Premium Leather seating surfaces (all rows), Adaptive Front-Lighting System (AFS), and centre-console Cooler Box. Shown here with Alpaca Beige Premium Leather seating, beige carpet, Straight-Grained Walnut Wood trim, and optional Rear Seat Package.



Land Rover LR3 V8 SE in Java Black Pearlescent with optional equipment.



Every LR3 is a sound decision.

What's the difference between excellent and exceptional sound quality? The finely tuned ears of harman/kardon engineers can easily tell. The answer is inside every LR3.

High Standards Are Standard

Listen to each nuance of sound from the LR3 SE audio system to establish your sense of the excellent. This harman/kardon system features nine speakers powered by 240 watts of amplification. The six-disc, in-dash CD changer plus an auxiliary input jack for an iPod® or MP3 player give you plenty of choices.

And Now, Perhaps, The Highest

Even the most ardent music lover will be impressed by the 14-speaker, 550-watt harman/kardon LOGIC7 system in the LR3 HSE. With its ability to digitally decode and play back every element of sound recorded by the artist, LOGIC7 may be unequalled. It can even translate and expand normal two-channel (stereo) recordings into seven-channel surround sound with incredible accuracy.

Land Rover LR3 HSE audio system shown above.



Maps are so 20th century.

The colour touch-screen GPS navigation system – standard on LR3 HSE and optional on LR3 V8 SE and LR3 V6 SE – places an incredible range of travel information at your disposal. It's like having a tour guide who knows all the local spots along for the ride.

Get There From Anywhere

The navigation system not only generates directions to almost any destination, but it can also provide useful information about hotels, restaurants, gas stations and ATMs en route. A seven-inch, high-resolution colour display serves as the command centre, putting its considerable capabilities at your fingertips.

Stay On Track, Even Off-Road

Head off-road and the navigation system can still keep up. Using GPS technology, it places “electronic breadcrumbs” along your trail so you can retrace your path back to home base.

The colour display can also access the 4x4 Driver Information Centre. It communicates essential information, such as the locking status of the differentials, a real-time 3D view of each wheel's position, a compass and even your specific latitude/longitude. Putting all this electronic wizardry at your service, the LR3 handles your off-road adventures with ease.



Peace of mind is standard equipment.

Accidents happen. But if one should occur, there's peace of mind knowing that LR3 has been engineered to provide outstanding occupant protection.

Anatomy Of A Robust Structure

The materials and design of the LR3 safety structure are essential in minimizing the effects of a collision. High-strength steel is used at key areas throughout to reinforce crashworthiness. A special lower-body structure enhances vehicle-to-vehicle compatibility in frontal collisions, while crumple zones divert impact energy away from the passenger cabin. In addition, every passenger door employs a high-strength-steel beam for side-impact protection.

In The Blink Of An Eye

The standard Supplemental Restraint System (SRS) comprises a total of up to eight airbags.* Deploying literally faster than the blink of an eye, these airbags play a critical role in protecting vehicle occupants in a serious collision. Dual front airbags and seat-mounted side/thorax airbags serve the driver and front passenger, while side-curtain airbags help protect front and second-row outboard occupants. Leaving little to chance, two additional side-curtain airbags are included for third-row passengers with RSC or RSP.

Two Frames Are Better Than One

Essentially a "double foundation," the Integrated Body-Frame™ combines the robust strength of a traditional ladder frame (long frame rails with substantial cross braces) with the weight-efficient rigidity of a monocoque (one-piece) superstructure. Working in tandem, the monocoque is exponentially stronger than it would otherwise be, and the frame is granted a nimble agility not possible on its own.

* See airbag SRS statement on page 45.

1 Boron steel reinforcements in the A- and B-pillars.

2 Driver and dual-threshold front-passenger airbags, front-seat side thorax airbags, and side-curtain airbags for outboard seating passengers, including third row (if equipped).

3 Front crumple zones, plus lower secondary load-path chassis construction.



4 Impact beams in the front and rear doors.

5 Integrated Body Frame with hydroformed members and advanced high-strength steels.



Land Rover LR3 V8 SE 18-inch wheel.

Ready – and willing –
for what's around the next bend.



The almost instantaneous action of all-terrain Dynamic Stability Control.* The world-renowned and world-tested grip of Land Rover permanent four-wheel drive. It reads like an impressive automotive resumé. But the LR3 is far more than even this collection of electronic and mechanical marvels. The LR3 has been engineered to provide a controlled yet highly rewarding driving experience, even in difficult road or weather conditions. No one knows what's around the next bend. The LR3, however, is designed to be prepared for it.

* DSC cannot regulate all the factors that influence vehicle control. Please practice safe driving techniques.



Dynamic systems for an ever-changing world.

Driving conditions can change dramatically and unpredictably – sometimes even the most skilled driver can't react in time. Fortunately, the myriad of dynamic systems engineered into the LR3 can act with speed and precision to help you stay on track.

All-Terrain Dynamic Stability Control

Able to detect a cornering-induced skid, all-terrain Dynamic Stability Control (DSC) – engineered for both paved and unpaved roads – can apply an individual brake and modulate engine power to help maintain your intended course.* The system is always on, whether you're driving in snow or making an emergency lane-change manoeuvre on dry pavement.

All-Terrain Anti-Lock Braking System

Designed to function regardless of terrain, the four-channel, all-terrain Anti-lock Braking System (ABS) helps prevent the wheels from locking under hard braking, while helping you retain steering control.

Emergency Brake Assist

During emergency braking situations, you want all available stopping power at your disposal. Emergency Brake Assist (EBA) senses just such

circumstances, and increases hydraulic brake pressure to help shorten braking distances.

Cornering Brake Control

Cornering Brake Control (CBC) can sense an impending spin resulting from hard braking during cornering. CBC modulates brake pressure at each wheel to help keep the vehicle travelling along the intended path.

Active Roll Mitigation

When Active Roll Mitigation (ARM) detects an impending rollover, it reduces engine power and applies individual brakes to widen the radius of the turn. This virtually instantaneous action can help decrease the likelihood of a rollover.

Hill Descent Control

When descending a very steep hill – whether off-road or at very low speeds on-road – engaging Hill Descent Control (HDC) can automatically limit the vehicle's speed to a safe, preset level without further driver intervention.

We drove over six million kilometres to get to your driveway.

What makes the LR3 a Land Rover? It's much more than simply a badge on the grille.

World-Tested, World-Renowned

Before the first production LR3 ever emerged from Solihull, England, Land Rover engineers subjected prototype vehicles to the most gruelling and comprehensive development process in the company's history. In total, it encompassed more than six million kilometres, and spanned five continents.

They soldiered through blistering heat and smothering humidity. Endured bone-chilling -40°C cold starts. Trekked from the sands of Dubai to the lofty mountain peaks of the Rockies, from north of the Arctic Circle to the

tip of South Africa – all in pursuit of the most inhospitable conditions and terrain on earth. Along the way, they verified the incredible maximum wading depth of the LR3 – 700 mm.* They even subjected the LR3's key to two-storey drops onto concrete and submersion in 22.86 m of water. Topping it off, they joined excruciating rush-hour traffic and took long highway trips laden with luggage – replicating the challenges of modern life.

The result? The LR3 is a Land Rover, from the inner recesses of its Integrated Body Frame to the tip of its Alpine roof.



* With Electronic Air Suspension in Off-Road mode. Always check the depth before attempting to cross water.



Land Rover LR3 SE in Java Black Pearlescent with optional equipment.

Engines that will satisfy your desire for exhilaration.

For those everyday instances when sufficient power isn't enough, the LR3 Engines place the necessary horsepower and torque.

V6 or V8

Considering the LR3's two engine choices – the 216-horsepower 4.0-litre V6 and the 300-horsepower 4.4-litre V8 – moving forward should never be an issue. Not only do these **highly advanced engines produce serious horsepower**, but they generate a very motivating 269 and 315 pound-feet of torque, respectively. That translates into impressive off-the-line performance, giving your right foot immediate, reassuring response.

The 4.0-litre V6 engine has also been thoroughly engineered for LR3 service. The combination of a lightweight, variable-track intake manifold and an electronically controlled throttle ensures that the driver has **precise control** over the engine's broad range of torque.

Among the noteworthy technologies of the 32 valve V8 engine is continuously Variable Camshaft Phasing (VCP), which can advance or retard the intake valve timing in less than 0.7 seconds, based on load, engine speed and other factors. The result is lower tailpipe emissions and **increased torque** at low engine speeds.

Six Speeds, Unlimited Involvement

The six-speed electronically controlled automatic transmission is the perfect ally for the V8's sporting intentions. Using "intelligent" technology, it can actually adjust its shifting characteristics to your driving style. Drive with vigour and it will shift with quick precision to match your mood. Proceed at a more relaxed pace, and it employs a smoother strategy. Should you feel the urge for a more involved driving experience, CommandShift™ manual control puts gear selection in your hands.

Defining Performance

Using a stopwatch is one way to measure performance. Driving up a mud-slick trail or wading a mountain stream is another. Land Rover engineers took all of these definitions into account.

The engine's lubrication system is designed for the severe angles often encountered off-road. Specific components are sealed against dust and water, while the fresh-air intake is placed high to accommodate the LR3's incredible wading depth. In short, the engines are prepared to perform suitable Land Rover duty.





Experience the satisfaction of maximum traction.

The estimable reputation that Land Rover has earned during the last six decades begins with its permanent four-wheel-drive system.



Land Rover LR3 HSE in Zermatt Silver Metallic

At their core, all Land Rover vehicles are meant to provide maximum traction regardless of weather or terrain. LR3 continues, even enhances, that tradition.

Evolution Of A Legend

A host of advanced technologies is integrated into the permanent four-wheel-drive system to enhance and aid its capabilities. The electronically controlled, infinitely variable locking centre differential, for example, can automatically redistribute engine power to the wheels with greater traction. For even greater control, an electronically locking rear differential is available. Four-wheel Electronic Traction Control (4ETC) is also on hand to eke out every millimetre

of grip. When 4ETC detects wheelspin, it applies the brake on an individual wheel to send power to those with more grip, and can even reduce engine power to maximize traction. It can maintain momentum, even when only one wheel has traction.

Low Range For Low Friction

In the event of extreme low-friction conditions – traversing rocky terrain or clawing through ankle-deep mud – Low Range can be engaged at just the touch of a button, even when the vehicle is moving. Low Range provides an extra set of lower gear ratios for maximum control in those extra-slippery, extra-low-friction conditions.

A dancing partner for the road.

Renowned for its off-road abilities, LR3 is also eager to aid and abet your desire for spirited on-road handling.



A Proclivity For Pavement

With fully independent double-wishbone suspension, LR3 exhibits road manners befitting a luxury sedan. Tuned for superlative on-road comfort and response, it boasts long-wheel travel to soak up even the most brutal of potholes.

An Uplifting Experience

The standard Electronic Air Suspension (EAS) enhances ride comfort as well as vehicle control. All four wheels – not just the rear – feature computer-controlled,

height-adjustable air springs, which automatically adapt to varying vehicle loads and conditions.

EAS benefits go beyond ride comfort and load levelling. Select Access mode to lower the vehicle when you stop, for easier ingress and egress. Change to Off-Road mode to raise the suspension by more than two inches during off-the-pavement travels. There's even an automatic Extended mode to help increase an individual tire's contact with the ground during challenging off-road driving.

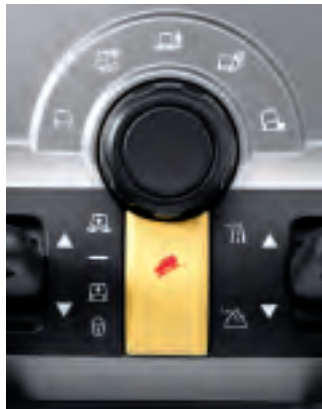


Land Rover LR3 HSE in Zermatt Silver Metallic.

Any-road expertise at the twist of a wrist.



GENERAL



Terrain Response™ puts everything Land Rover has learned about four-wheel-drive traction directly at your fingertips. It's a unique feature, patented and developed by Land Rover to continuously monitor and adjust the LR3's numerous dynamic systems for maximum traction.



Terrain Response is never "off," and the General setting is compatible with all on- and off-road conditions. Terrain Response will automatically react to road conditions and make multiple adjustments to give you maximum control.



GRASS/GRAVEL/SNOW



The Grass/Gravel/Snow setting maximizes traction on firm but slippery surfaces. Wet leaves and grass or hard-packed snow and ice call for this mode.

Note: Terrain Response cannot regulate all the factors that influence vehicle control. Please practice safe driving techniques.



MUD & RUTS



Selecting Mud & Ruts can make a tremendous difference on soft, wet ground where some degree of wheelspin is desirable to maintain vehicle momentum. Since Low Range is recommended here, you'll be prompted to shift to the transfer gearbox for this program.



SAND



Choose the Sand setting for additional control in dry, soft sand or loose dirt. With significant adjustments to the engine, transmission, and traction control programming, the Sand setting helps you power through desert conditions with ease.



ROCK CRAWL



The Rock Crawl setting provides additional control in Low Range. Rock Crawl should be utilized when you expect to encounter clusters of boulders or other large obstacles where maximum wheel articulation, ground clearance and low-speed traction are essential.



Land Rover LR3 HSE in Zermatt Silver Metallic.



The Land Rover Experience

Land Rover Way Retailer Events. Sponsored by your Land Rover Retailer, these events better acquaint you with your vehicle's supreme capabilities or offer access to unique culinary and lifestyle activities. Some events have a special twist, such as incorporating off-road driving with an afternoon of fishing in a remote locale or watching a championship polo match.

Warranty & Complimentary Scheduled Maintenance. Every new Land Rover is covered by a 4-year/80,000 km New-Vehicle Limited Warranty. Furthermore, LR3 owners enjoy Complimentary Scheduled Maintenance during the warranty period. See your Land Rover Retailer for details.

Land Rover Adventures. These thrilling off-road expeditions let you test a Land Rover's capability in some of the most scenic – and challenging – off-road locations on earth, such as Moab, Utah or Cape Town, South Africa. What makes an Adventure even more special is that at day's end, you will retire to a luxury resort or an upscale rustic retreat. For more information, visit landrover.com/ca.

Land Rover Experience Driving Schools. Breathtaking scenery, luxurious accommodations and hands-on instruction in all aspects of off-road driving – this is an experience like no other. Land Rover Experience Driving Schools provide personalized instruction on purpose-built courses, where the degree of difficulty is matched to your skills and desires. There are Land Rover Experience Driving Schools in Quebec, Canada, at Fairmont le Château Montebello, Biltmore Estate in Asheville, N.C., and at Quail Lodge in Carmel, California. For more information, visit landrover.com/ca.

While all drivers are welcome, owners of a Land Rover vehicle will receive a special discount. Additionally, upon purchase of a new Land Rover vehicle, Canadian owners will receive a complimentary half day off-road driving instruction lesson at the world renowned Fairmont le Chateau Montebello in Quebec

In addition, **Land Rover Financial Services** (a division of PRIMUS Automotive Financial Services Canada) offers competitive rates, innovative products, flexible terms and outstanding customer service. For most current lease and finance information, **visit your local Land Rover retailer.**



Land Rover LR3 specifications



MINIMUM GROUND CLEARANCE
 185 mm (7.3 in.) in Standard mode
 240 mm (9.5 in.) in Off-Road mode

| | |
|--------------------------|---|
| MAXIMUM GRADIENTS | |
| Angle of approach | 32.2-37.2 degrees* |
| Angle of departure | 24.9-29.6 degrees* |
| Ramp breakover angle | 22.8-27.9 degrees* (excluded angle) |
| Ascent/Descent | 45/45 degrees drive-through 35/35 degrees continuous |
| Side slope | 35 degrees continuous |



BODY/CHASSIS CONSTRUCTION

- Integrated Body-Frame with hydroformed members and advanced high-strength steels, including boron steel in the A- and B-pillars.
- Outer-body panels are double-sided zinc-coated steel and aluminum alloy.

ENGINES

| | LR3 V8 SE & HSE | LR3 V6 SE |
|--------------------------|--|--|
| Type | 90-degree V8 | 60-degree V6 |
| Construction | Aluminum-alloy cylinder head and block. | |
| Displacement | 4.4 litres (4394 cu. cm/268 cu. in.) | 4.0 litres (4009 cu. cm/245 cu. in.) |
| Bore x stroke | 88 x 90.3 mm (3.47 x 3.56 in.) | 100.4 x 84.4 mm (3.95 x 3.32 in.) |
| Valvetrain | Chain-driven double-overhead camshafts, four valves per cylinder. Variable Camshaft Phasing (VCP). | Single-overhead camshaft, two valves per cylinder. |
| Compression ratio | 10.5:1 | 9.75:1 |
| Horsepower @ rpm | 300 bhp @ 5,500 rpm | 216 bhp @ 4,500 rpm |
| Torque @ rpm | 315 lb-ft @ 4,000 rpm | 269 lb-ft @ 3,000 rpm |
| Fuel management | Sequential multi-port fuel injection. | |
| Ignition | Distributorless ignition system. | |
| Fuel requirements | Premium unleaded. | Premium unleaded. |
| Fuel tank | 86.3 litres (22.8 U.S. gallons) | 86.3 litres (22.8 U.S. gallons) |

DRIVETRAIN

| | | | |
|-------------------------|---|--|------------------------------|
| Drive system | Permanent four-wheel drive. | | |
| Traction control | Four-wheel Electronic Traction Control (4ETC). | | |
| Transfer gearbox | Two-speed electronic transfer gearbox. Shift-on-the-move capability. Electronically controlled, infinitely variable locking centre differential. Optional electronically controlled, infinitely variable locking rear differential. | | |
| Transfer ratios | High: 1.00:1 | Low: 2.93:1 | |
| Transmission | ZF HP26 six-speed electronically controlled automatic transmission with CommandShift manual control. Locking torque converter. Normal, Sport and CommandShift manual shift modes. | | |
| Gear ratios | 1st - 4.17:1 4th - 1.14:1 Reverse - 3.40:1 | 2nd - 2.34:1 5th - 0.87:1 Final-drive ratio - 3.73:1 | 3rd - 1.52:1 6th - 0.69:1 |

WHEELS & TIRES

| | |
|------------------|--|
| Wheels | 18 x 8.0-in. aluminum alloy on V8 SE and V6 SE. 19 x 8.0-in. aluminum alloy on V8 HSE. |
| Tire size | 255/60R18 mud+snow radials on V8 SE and V6 SE. 255/55R19 mud+snow radials on V8 HSE. |
| Spare | 175/80R19 temporary spare tire on steel wheel. Optional full-size spare tire and aluminum-alloy wheel. |

* Figures represent the range with EAS in Standard mode and in Off-Road mode, except for wading depth, where EAS is in Off-Road mode only.
 Note: Departure angle is 14.7-17.6 degrees with tow bar.



STEERING

| | |
|--------------------|---------------------------------|
| Type | Power-assisted rack-and-pinion. |
| Turns lock-to-lock | 3.3 |
| Turning circle | 11.45 m (37.6 ft.) |



MAXIMUM WADING DEPTH
700 mm (27.6 in.)

MAXIMUM CARGO VOLUME



With all seats folded:
Up to 2.56 m³ (90.3 cu. ft.)

SUSPENSION

Electronic Air Suspension (EAS) with automatic load-levelling and multiple modes: Access (50 mm/2.0 in. lower). Standard, Off-Road (55 mm/2.2 in. higher) plus automatic Extended Mode. Cross-link valves for improved off-road performance.

Front

Independent, double-wishbone with long-travel air springs. 255 mm (10.0 inches) of vertical wheel travel.

Rear

Independent, double-wishbone with long-travel air springs. 330 mm (13.0 inches) of vertical wheel travel.

BRAKES & DYNAMIC CONTROL SYSTEMS

- Power-assisted four-wheel ventilated disc brakes.
- 337-mm. front/350-mm. rear discs (13.3/13.8-in) on V8, 317-mm. front/325-mm. rear discs (12.5/12.8-in) on V6.
- Four-channel, all-terrain Anti-lock Braking System (ABS).
- Electronic Brakeforce Distribution (EBD).
- Emergency Brake Assist (EBA).
- Cornering Brake Control (CBC).
- Electronic parking brake with emergency full hydraulic capability.
- Active Roll Mitigation (ARM).
- Hill Descent Control (HDC).
- All-terrain Dynamic Stability Control (DSC).

TERRAIN RESPONSE SYSTEM

- Multi-mode system to maximize traction and control in a variety of driver-selectable settings: General (optimizing systems for most normal driving conditions); Grass/Gravel/Snow; Mud/Ruts; Sand; and Rock Crawl.

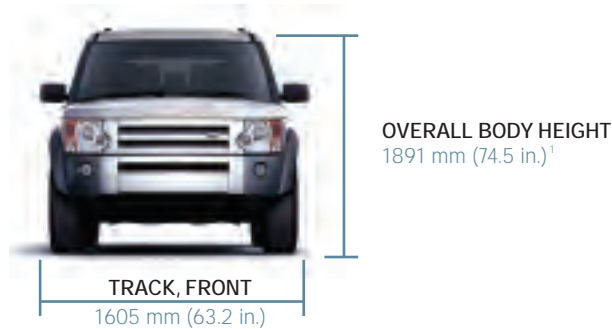
PAYLOAD & TOWING CAPACITY

| | LR3 V8 SE & HSE | LR3 V6 SE |
|---|---------------------------------------|---------------------------------------|
| Curb weight | 2461 - 2629 kg (5,426 - 5,796 lb.) | 2411 - 2625 kg (5,315 - 5,787 lb.) |
| Gross Vehicle Weight Rating (GVWR) | 3230 kg (7,121 lb.) | 3230 kg (7,121 lb.) |
| Maximum payload | 601 - 769 kg (1,325 - 1,695 lb.) | 605 - 819 kg (1,334 - 1,806 lb.) |
| Maximum roof-rack load | 75 kg (165 lb.) | 75 kg (165 lb.) |
| Maximum trailer weights | | |
| Trailers without brakes | 750 kg (1,654 lb.) | 750 kg (1,654 lb.) |
| Trailers with brakes | 3500 kg (7,716 lb.) | 3500 kg (7,716 lb.) |
| Maximum torque weight | 250 kg (551 lb.) | 250 kg (551 lb.) |

INTERIOR DIMENSIONS

| | |
|----------------------------------|--|
| Seating capacity | Five (seven optional) |
| Head room, front/rear | 1027/1076 mm (40.4/42.4 in.) |
| Head room, third row | 1018 mm (40.1 in.) |
| Leg room, front/rear | 1078/955 mm (42.4/37.6 in.) |
| Leg room, third row | 923 mm (36.3 in.) |
| Shoulder room, front/rear | 1503/1508 mm (59.2/59.4 in.) |
| Shoulder room, third row | 1087 mm (42.8 in.) |
| Cargo capacities | |
| ■ All seats folded | 2.48-2.56 m ³ (87.4-90.3 cu. ft.) |
| ■ Behind 2nd-row seat | 1.19-1.26 m ³ (42.1-44.5 cu. ft.) |
| ■ Behind 3rd-row seat | .28 m ³ (9.9 cu. ft.) |
| Max. loadspace length | 1831-1950 mm (72.1-76.8 in.) |
| Max. loadspace width | |
| ■ Between wheel arches | 1146 mm (45.1 in.) |
| ■ Maximum width | 1235 mm (48.6 in.) |

Land Rover LR3 features



SAFETY & SECURITY FEATURES

- Up to an eight-airbag Supplemental Restraint System (SRS).² Driver and dual-threshold front-passenger airbag SRS, side thorax airbag SRS for front seating positions, and head-protection side-curtain airbag SRS for first- and second-row outboard seating positions. Additional third-row side-curtain airbag SRS in vehicles with optional Rear Seat and Climate Package. Front-passenger-seat occupant-detection system.
- Side-door impact beams in the front and rear doors.
- LATCH (Lower Anchor and Tether for Children) system for child seat attachment. Child seat tether anchors.
- Front crumple zones. Lower secondary load-path chassis construction.
- Collapsible steering column.
- Collision-activated inertia switch (unlocks doors, turns off fuel pump, turns on hazard lights).
- Electronic parking brake.
- Front and rear one-piece, three-point lap/shoulder safety belts for all seating positions. Height-adjustable front safety-belt anchors.
- Pre-tensioning front safety belts.
- Integral head restraints, front and rear, including second-row centre seating position (and third-row seats, if fitted).
- Foldable and removable rear loadspace cover with two positions and integrated roller cover.
- Vehicle security system with keyless entry. In-vehicle rechargeable transponder key with configurable third-button feature.
- Central locking system. Emergency key entry via concealed panel in driver's door.
- Child locks for rear doors and power windows.
- Dual electrically adjustable heated exterior mirrors.
- Auto-dimming inside rearview mirror in V8 SE and V8 HSE.
- Programmable, automatic dipping of passenger-side rearview mirror in Reverse. Standard in V8 HSE.
- "Twin pocket" quartz halogen headlights standard on V6 SE and V8 SE. Automatic bi-Xenon headlights standard on V8 HSE, Headlight washers and front fog lights standard on V8 SE and V8 HSE.
- Daytime running lights.
- Rear fog lights.
- Deep-tinted glass (aft of the B-pillar), including sunroof and Alpine roof.
- Electric rear-window defroster.
- Tire Pressure Monitoring System (TPMS).

COMFORT & CONVENIENCE FEATURES

- Colour, touch-screen DVD-based GPS navigation system and 4x4 Driver Information Centre standard on V8 HSE. Optional package on V8 SE and V6 SE.
- Asymmetrical split tailgate for ease of access and loading.
- Dual-zone automatic climate control. Programmed defrost.
- Outside-temperature display. Standard in V8 SE and V8 HSE.
- Cold Climate Package Includes heated front and second-row seats with two heating levels, heated front windshield and heated windshield-washer jets.
- Leather seating surfaces.
- Electronic cruise control with steering-wheel-mounted controls.
- Leather wrapped tilt & telescopic steering wheel. Power adjustable steering column with memory on LR3 V8 HSE. Manual on V8 SE and V6 SE.
- Reclining, ergonomically designed, eight-way power adjustable driver's seat and eight-way power adjustable front-passenger seat. Power lumbar support for driver's seat. Dual folding front armrests.
- Memory system for driver's seat and exterior mirrors standard in V8 HSE. N/A in V8 SE and V6 SE.
- Power windows with backlit controls and one-touch "down" feature for driver and front-passenger windows.
- Power tilt-and-slide front sunroof plus fixed Alpine roof with integrated sun blinds.
- "Time out" feature (retained accessory power) for power windows, sunroof and power front seats.
- Front and rear cupholders. Door-mounted bottle holders in front and rear doors, plus for third row, if fitted.
- Full instrumentation, including tachometer. Fuel-filler-door indicator. Message Centre in instrument panel.
- Rear Park Distance Control. Standard on V8 SE and V8 HSE.
- Front Park Distance Control. Standard on V8 HSE. Optional on V8 SE with bi-Xenon headlight package.
- Variable intermittent windshield wipers. Rear-window washer and wiper. Automatic rear wiper function. Rain-sensing front wipers on V8 SE and V8 HSE.
- 65:35 split folding second-row seat.
- HomeLink system for garage doors and security gates. V8 SE and V8 HSE only.



AUDIO SYSTEMS

- 240-watt harman/kardon AM/FM stereo audio system with six-disc in-dash CD changer and nine speakers. Standard in V6 SE and V8 SE.
- 550-watt harman/kardon LOGIC7 digital surround-sound AM/FM stereo audio system with six-disc in-dash CD changer and 14 speakers. Second- and third-row personal remote audio outputs. Standard in V8 HSE.
- Auxiliary input for iPod or similar music device.
- Glass-mounted diversity antenna system.
- Steering-wheel-mounted audio controls.

OPTIONS

- **Rear Seat Package³** with forward-facing, flat-folding third-row seats. Individual head restraints and three-point safety belts. Includes side-curtain airbag SRS and 35:30:35 split flat-folding second-row seat.
- **Rear Seat Climate Package.³** Includes all features listed in Rear Seat Package plus second- and third-row controls for air conditioning, heating and airflow.
- **Front Park Distance Control (PDC) and Bi-Xenon Package.** Includes automatic bi-Xenon headlights and front Park Distance Control. Standard on V8 HSE. Optional on V8 SE.
- **Lighting Package.** Bi-Xenon headlights with Front & Rear fog lights, rain sensing wipers, puddle & footwell lights, Auto-dimming Rear View Mirror with Homelink® (V6 SE)
- **Luxury Package.** Includes Adaptive Front-Lighting System, Premium leather seats (including third-row if equipped) and centre-console Cooler Box. Optional on V8 HSE only.
- **Heavy-Duty Package.** Includes active electronically controlled locking rear differential, and full-size spare tire and alloy wheel.
- **DVD Entertainment System** (retailer-installed).
- **Java Black Pearlescent** exterior finish.
- **Straight Grained Walnut Trim.** Interior wood trim on centre console uprights and end caps. Standard on HSE. Optional on V6 SE and V8 SE.⁵
- **Grand Black Lacquer Trim.** Interior wood trim and centre console uprights and end caps. No charge option on HSE. Optional on V6 SE and V8 SE.⁵

WARRANTIES & SCHEDULED MAINTENANCE

- 4-year/80,000-km (50,000-mile) New-Vehicle Limited Warranty¹
- 6-year/unlimited-mileage Corrosion Perforation Limited Warranty²
- Land Rover 24-hour Roadside Assistance.⁴
- Complimentary Scheduled Maintenance Program⁴

1. Including roof rails. With Electronic Air Suspension (EAS) in Standard mode.
2. Please remember that the safety belts in LR3 constitute the primary protection system for passengers in collisions. Airbag Supplemental Restraint Systems (SRS) are a supplement to the safety belts. Although airbags provide additional protection, airbags alone are not sufficient. Always wear your safety belts. Children younger than 12 years old should always be properly restrained in a back seat, away from airbags. Never place a rear-facing infant seat in the front seat.
3. 65:35 second-row seats are standard on all models, and 35:30:35 second-row seats are optional as part of the Rear Seat Package or the Rear Seat and Climate Package.
4. See your Land Rover Retailer for details.
5. Delayed availability on V6 SE and V8 SE.

Classified as a multipurpose vehicle with a GVWR over 2722 kg (6,000 lb.). All information, specifications and illustrations contained herein are based on the latest product information available at time of publication. Land Rover Canada reserves the right to make changes at any time, without notice, to colours, materials, equipment, specifications and models, and is not responsible for typographical errors. Such changes may affect vehicle pricing and vehicle content. Not all models of Land Rover products are available in every market. Consult your Land Rover Retailer for advice on correct specifications. HomeLink® is a registered trademark of Johnson Controls. harman/kardon and LOGIC7 are registered trademarks of Harman International. iPod is a registered trademark of Apple Computer, Inc. All rights reserved.

Land Rover Vehicle Kit



Genuine Land Rover Vehicle Kit is a premier collection of specialized accessories, designed and constructed to the same high standards as the vehicles themselves. And when purchased with your new LR3, Vehicle Kit carries the same limited warranty as the vehicle.* From wood kits to the Audio Connectivity Module for MP3 players or USB memory sticks to the dramatically appealing Reflection Pack, shown above, Genuine Land Rover Vehicle Kit lets you make your LR3 as distinctive as your interests and personality.

For more information about the complete line of Land Rover Vehicle Kit, available exclusively from authorized Land Rover Retailers, talk to your Sales Guide. He or she will be happy to assist you in outfitting your LR3 to meet your needs. You can also use an interactive accessory builder tool at www.landrover.com/ca to see how Land Rover Vehicle Kit will look on your LR3.

* See your Land Rover Retailer for details.

2008 Land Rover LR3 model line-up.



| | LR3 V6 SE Five split-spoke 18-inch wheel | LR3 V8 SE Ten-spoke 18-inch wheel | LR3 V8 HSE Six-spoke 19-inch wheel |
|--|---|--------------------------------------|---------------------------------------|
| Rear Seat Package with third-row seating and supplemental side-curtain airbag SRS | Opt. | Opt. | Opt. |
| Rear Seat and Climate Package plus second- and third-row controls for air conditioning, heating and airflow | Opt. | Opt. | Opt. |
| 65:35 split folding second-row seat | Std. | Std. | Std. |
| 35:30:35 split flat-folding second-row seat | Opt. ¹ | Opt. ¹ | Opt. ¹ |
| Cold Climate Package with heated front and second-row seats and heated front windshield | Std. | Std. | Std. |
| Memory system for driver's seat and exterior mirrors | N/A | N/A | Std. |
| 240-watt harman/kardon AM/FM audio system with six-disc in-dash CD changer, nine speakers and steering-wheel-mounted controls | Std. | Std. | N/A |
| 550-watt harman/kardon LOGIC7 AM/FM audio system with six-disc in-dash CD changer, 14 speakers and steering-wheel-mounted controls | N/A | N/A | Std. |
| Personal Telephone Integration system with Bluetooth capability | Opt. Package ² | Opt. Package | Std. |
| Rear Park Distance Control | N/A | Std. | Std. |
| Front Park Distance Control and automatic bi-Xenon headlights | N/A | Opt. | Std. |
| Colour, touch-screen DVD-based GPS navigation system and 4x4 Driver Information Centre | Opt. | Opt. | Std. |
| Luxury Package with Adaptive Front-Lighting System, Premium Leather Seats and centre-console Cooler Box | N/A | N/A | Opt. ¹ |
| Heavy-Duty Package with electronically controlled locking rear differential and full-size spare tire and alloy wheel | Opt. | Opt. | Opt. |
| DVD Entertainment System ² | Opt. | Opt. | Opt. |
| Five split-spoke, 18-inch alloy wheels with 255/60R18 radial tires | Std. | N/A | N/A |
| Ten-spoke, 18-inch alloy wheels with 255/60R18 radial tires | N/A | Std. | N/A |
| Six-spoke, 19-inch alloy wheels with 255/55R19 radial tires | N/A | N/A | Std. |
| Auto-dimming inside rearview mirror | Opt. Package | Std. | Std. |
| HomeLink system for garage doors and security gates | Opt. Package | Std. | Std. |
| Rain-sensing windshield wipers | Opt. Package | Std. | Std. |
| Front fog lights and headlight washers | Opt. Package | Std. | Std. |

1. 35:30:35 split flat-folding second-row seat and second- and third-row climate controls are included with Rear Seat and Climate Package. 2. Retailer-installed.

Exterior and interior colour matrix

| EXTERIOR FINISH | V6 SE INTERIOR | | V8 SE INTERIOR | | V8 HSE INTERIOR | |
|--------------------------|----------------|-------------|----------------|-------------|-----------------|-------------|
| | ALPACA BEIGE | EBONY BLACK | ALPACA BEIGE | EBONY BLACK | ALPACA BEIGE | EBONY BLACK |
| Java Black Pearlescent* | ▲ | ▲ | ▲ | ▲ | ▲ | ▲ |
| Buckingham Blue Metallic | ▲ | △ | ▲ | △ | ▲ | △ |
| Zermatt Silver Metallic | △ | ▲ | △ | ▲ | △ | ▲ |
| Chawton White | ▲ | △ | ▲ | △ | ▲ | △ |
| Tonga Green Pearlescent | ▲ | △ | ▲ | △ | ▲ | △ |
| Rimini Red Metallic | △ | △ | ▲ | △ | ▲ | △ |
| Stornoway Grey Metallic | △ | ▲ | △ | ▲ | △ | ▲ |

▲ Available colour combinations. △ These colour combinations may not be readily available, except by special retailer order.

Note: Alpaca Beige interior comes with beige carpet; Ebony Black interior comes with black carpet. Also applies to Luxury Package interiors.



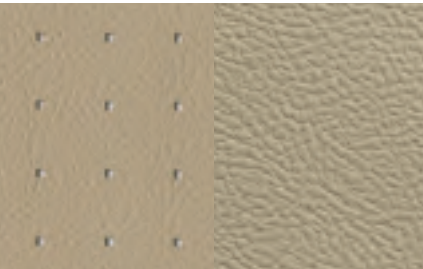
Brunel Metallic (SE only)



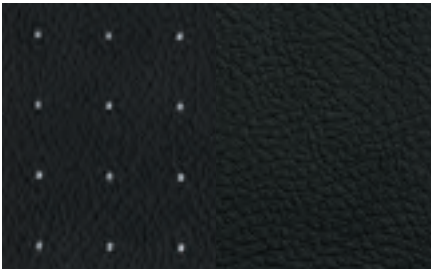
Straight-Grained Walnut Wood (HSE only)



Grand Black Lacquer Wood (HSE only: No-cost option)



Alpaca Beige Leather†

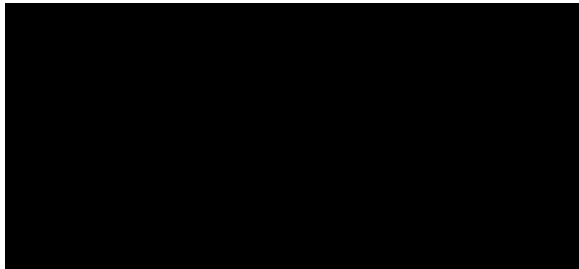


Ebony Black Leather†

* Java Black Pearlescent is an extra-cost option.
 ** This exterior colour is scheduled to change later in 2007. See your Land Rover Retailer for details.
 † Standard leather shown. Luxury Package Premium Leather seating (HSE option only) available in Alpaca Beige and Ebony Black with non-perforated, "gathered" leather.

Note: Availability of certain exterior and interior colour combinations may be limited or delayed. Please consult your Land Rover Retailer. Land Rover Canada reserves the right to alter or withdraw any colour finish without notice. The colours shown are intended primarily as a guide, and, although they closely approximate the actual colours used, they are not to be used for paint matching or for any other purpose for which complete accuracy is essential.

Exterior colours



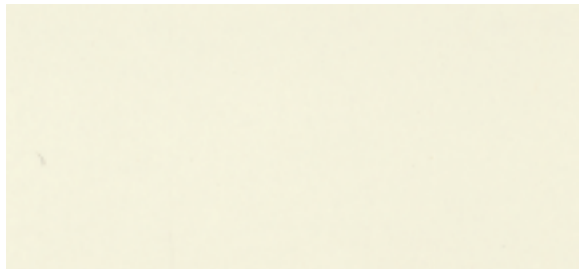
Java Black Pearlescent*



Buckingham Blue Metallic



Zermatt Silver Metallic



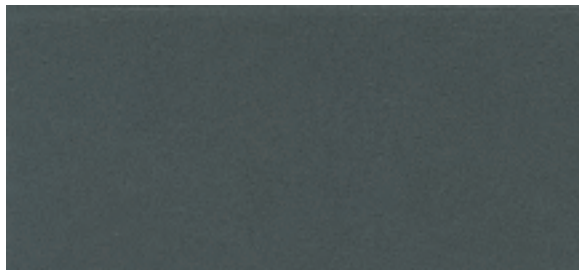
Chawton White**



Tonga Green Pearlescent



Rimini Red Metallic



Stornoway Grey Metallic

This Land Rover brochure is printed on recycled paper that contains a minimum of 10% post-consumer (PCW) fibre. This recycled paper is made from fibre sourced from well-managed forests and other controlled wood sources and is independently certified by SmartWood, a program of the Rainforest Alliance, to the Forest Stewardship Council (FSC) standards.

FSC is an independent nonprofit organization devoted to encouraging the responsible management of the world's forests. FSC sets high standards to ensure that forestry is practiced in an environmentally responsible, socially beneficial, and economically viable way.

Please recycle this brochure after use.

© 2007 Land Rover Canada
Land Rover Canada
8 Indell Lane
Bramalea, Ontario L8T 4H3
landrover.com/ca

1-800-FIND 4WD
Printed in Canada





1-800-FIND 4WD
Canada - landrover.com/ca